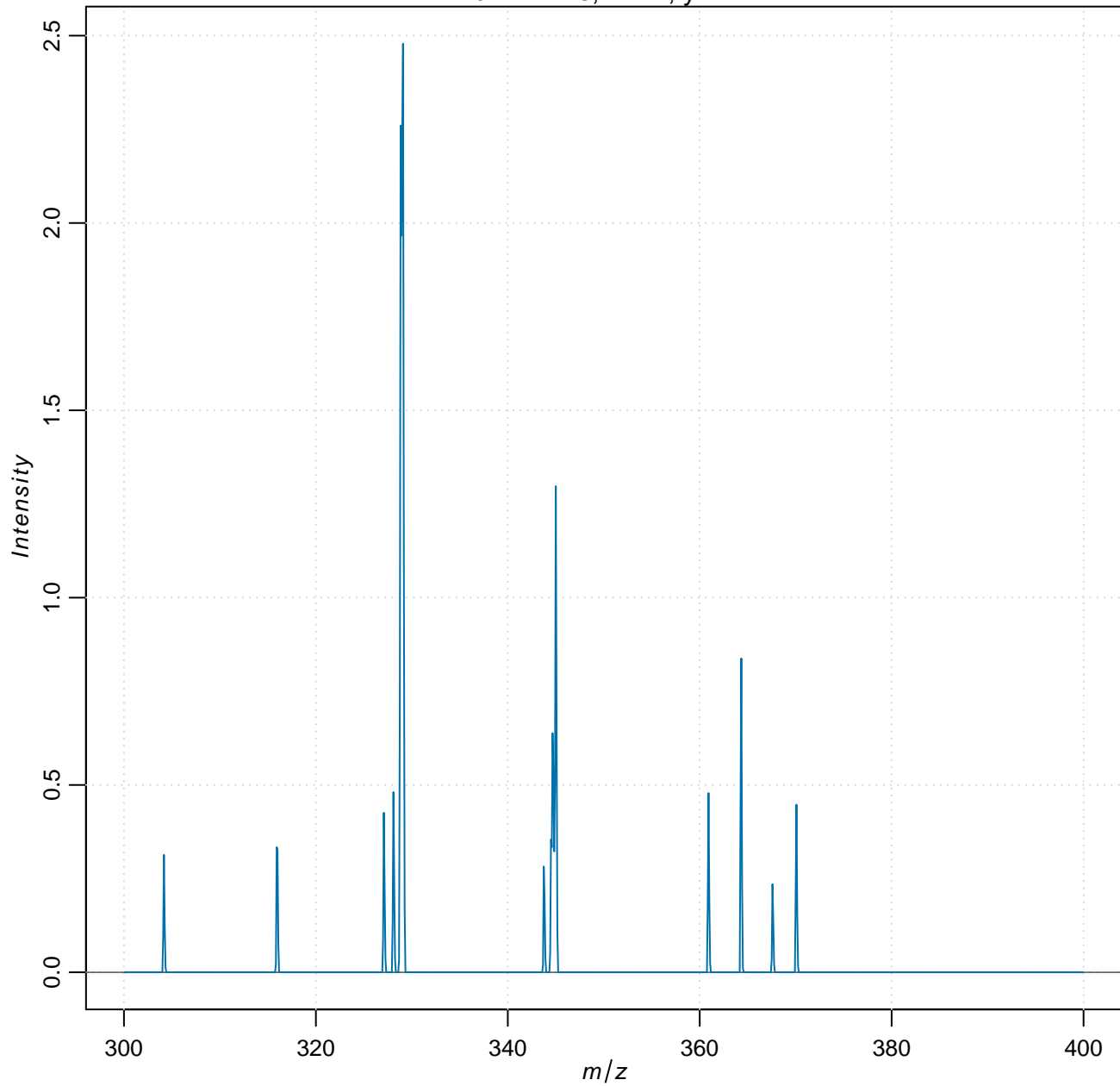


# Mass spectra for file:

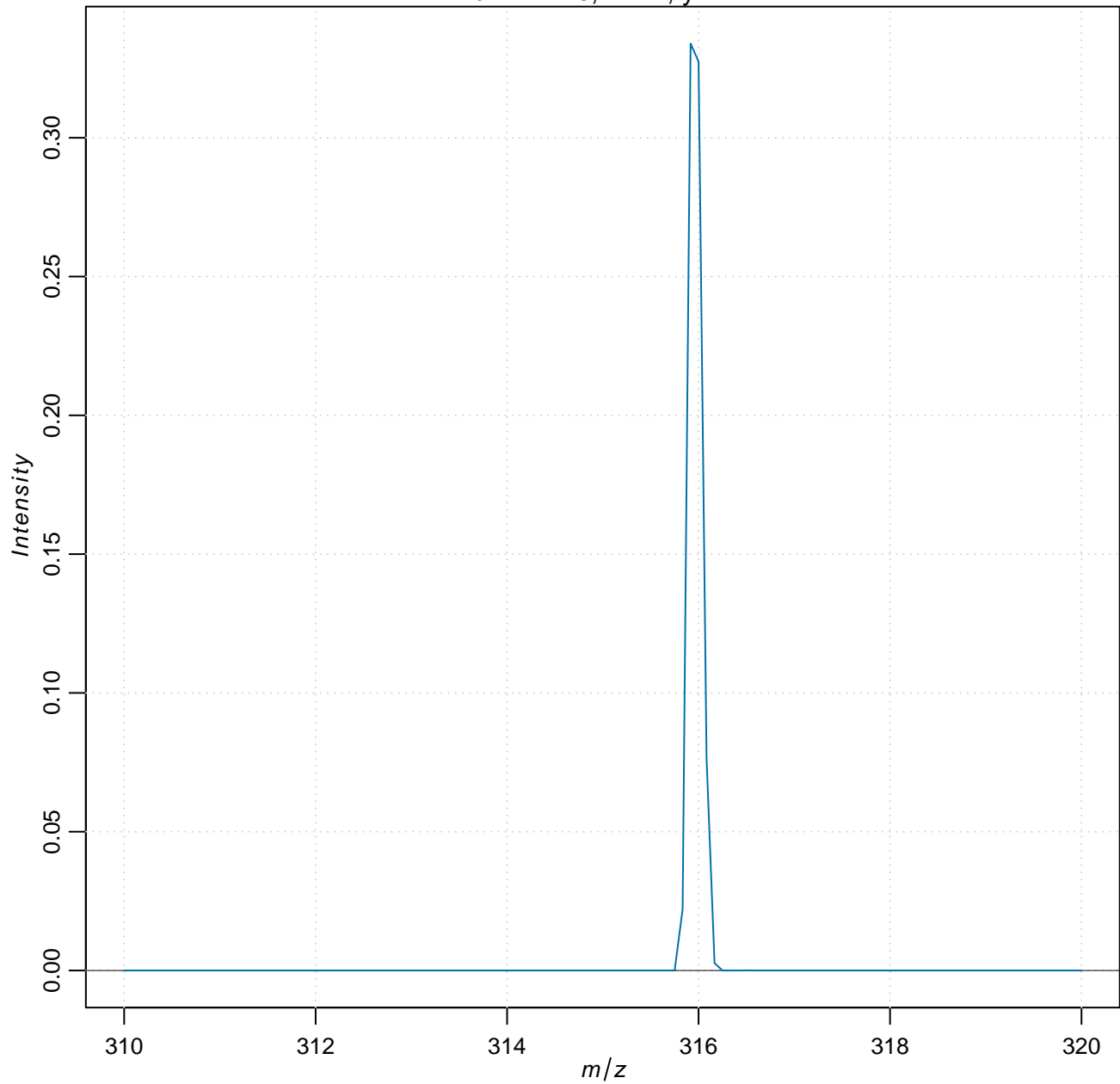
files\_

properties	values
Number of m/z features	1199
Range of m/z values	300.08 – 399.92
Number of pixels	9
Range of x coordinates	1 – 3
Range of y coordinates	1 – 3

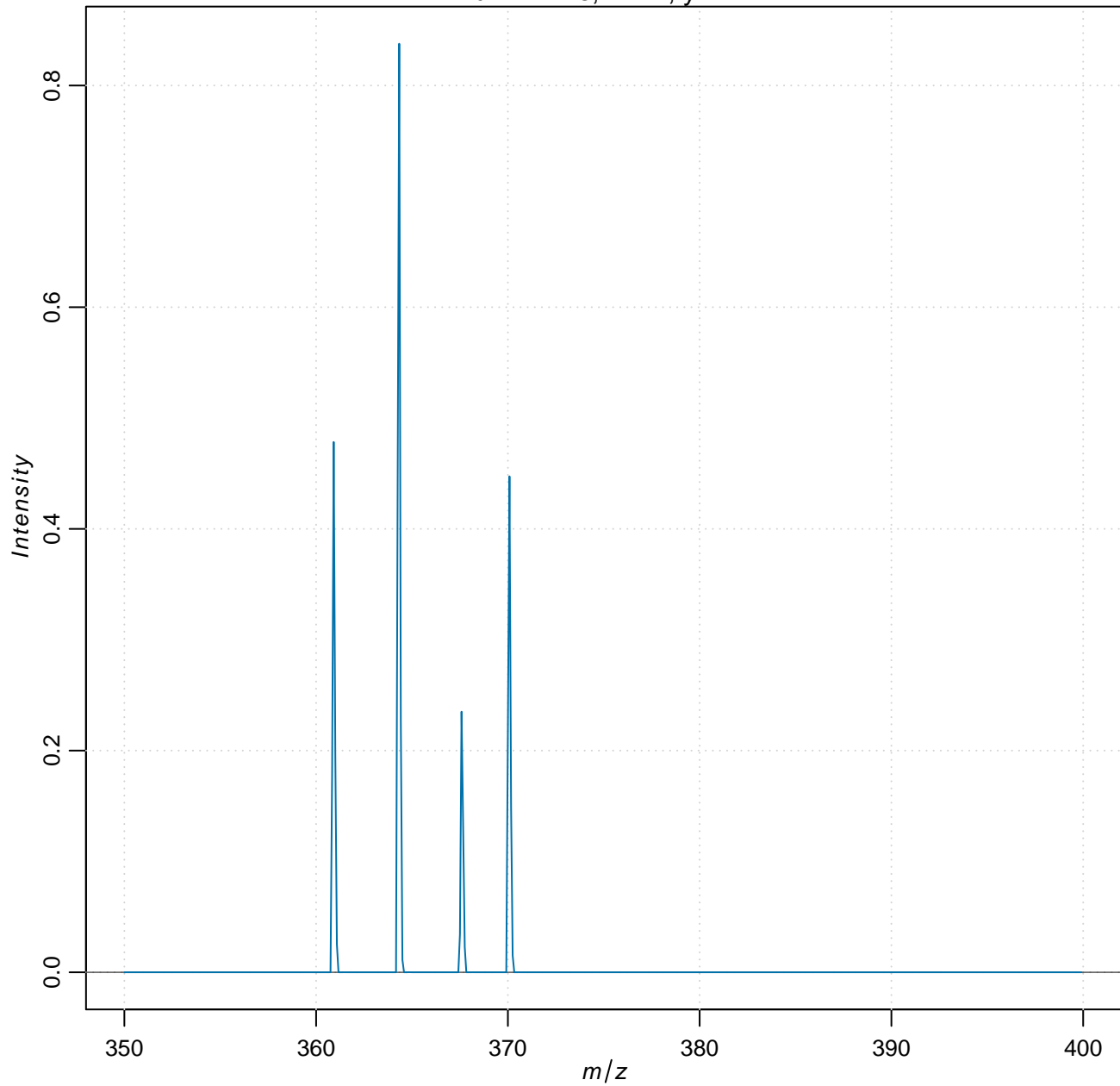
run = infile, x = 1, y = 1



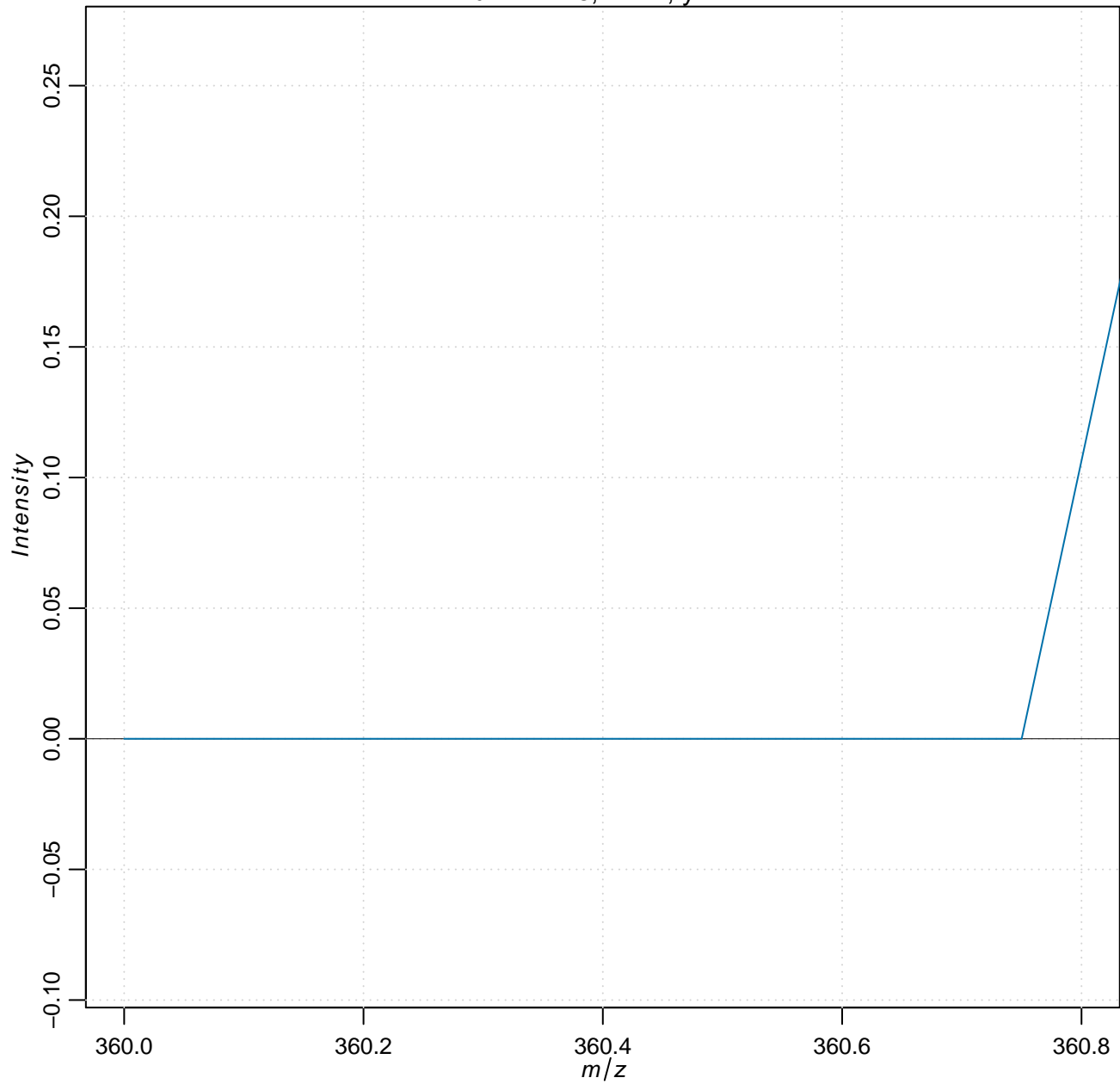
run = infile, x = 1, y = 1



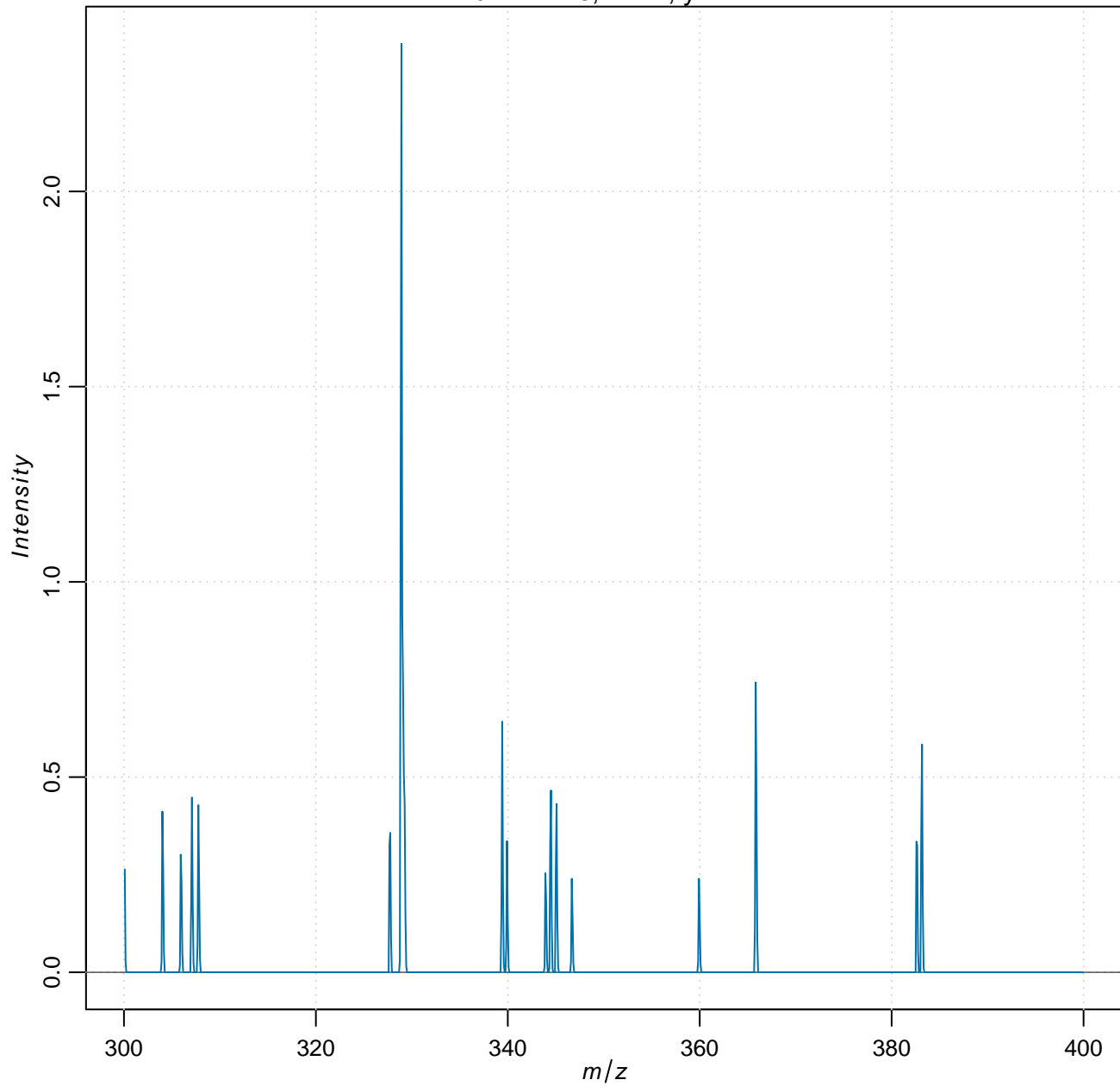
run = infile, x = 1, y = 1



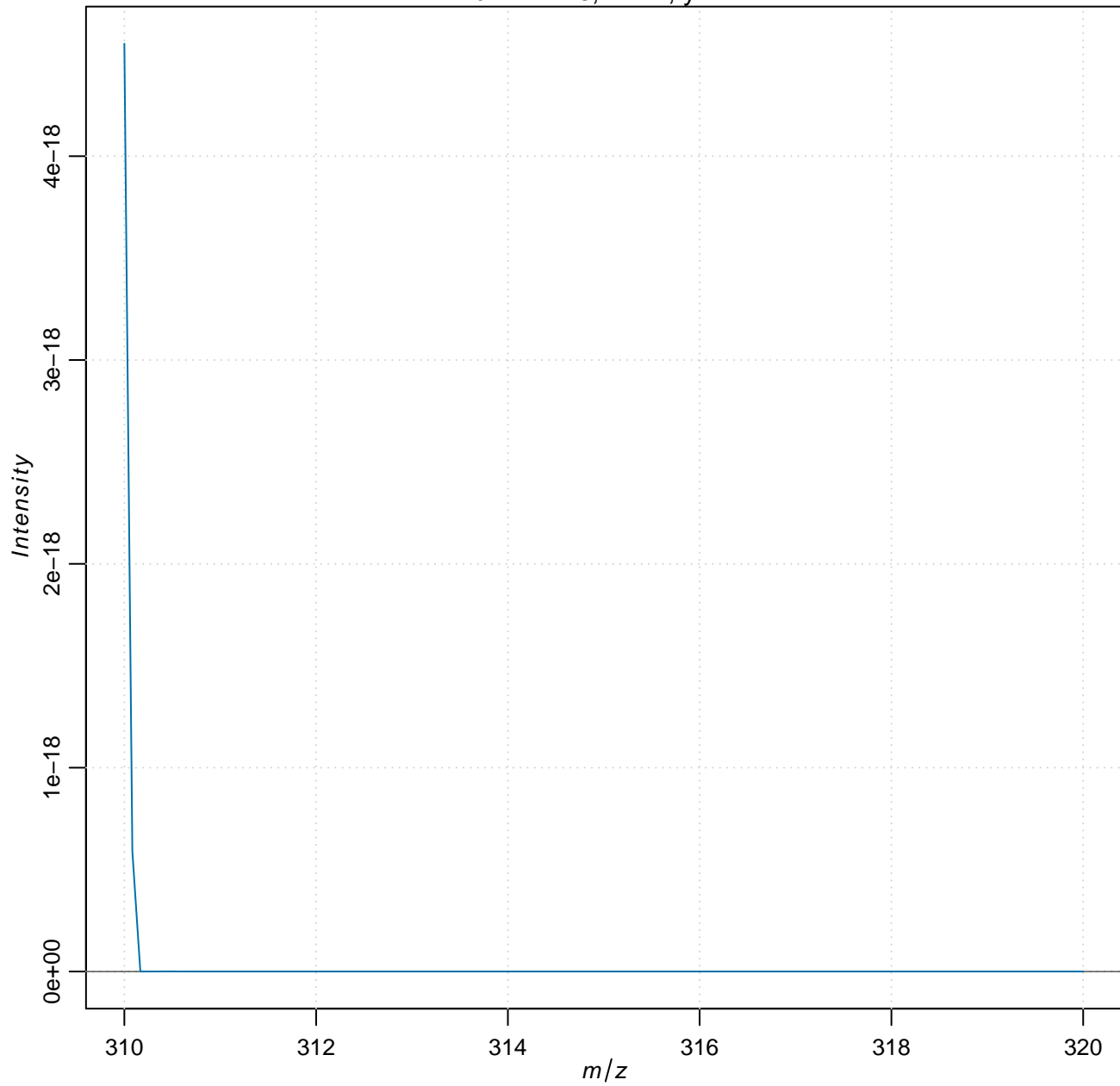
run = infile, x = 1, y = 1



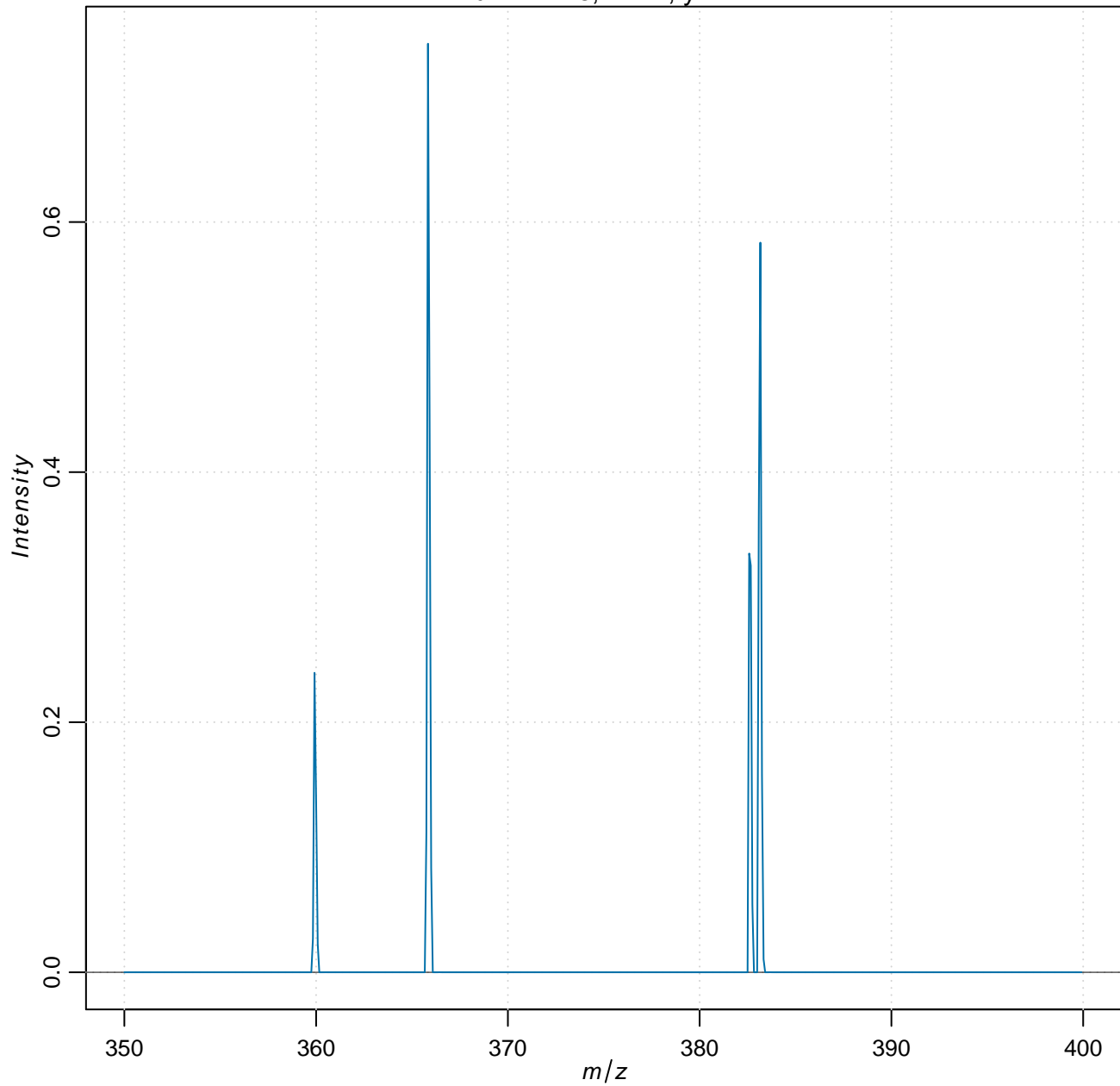
run = infile, x = 2, y = 2



run = infile, x = 2, y = 2

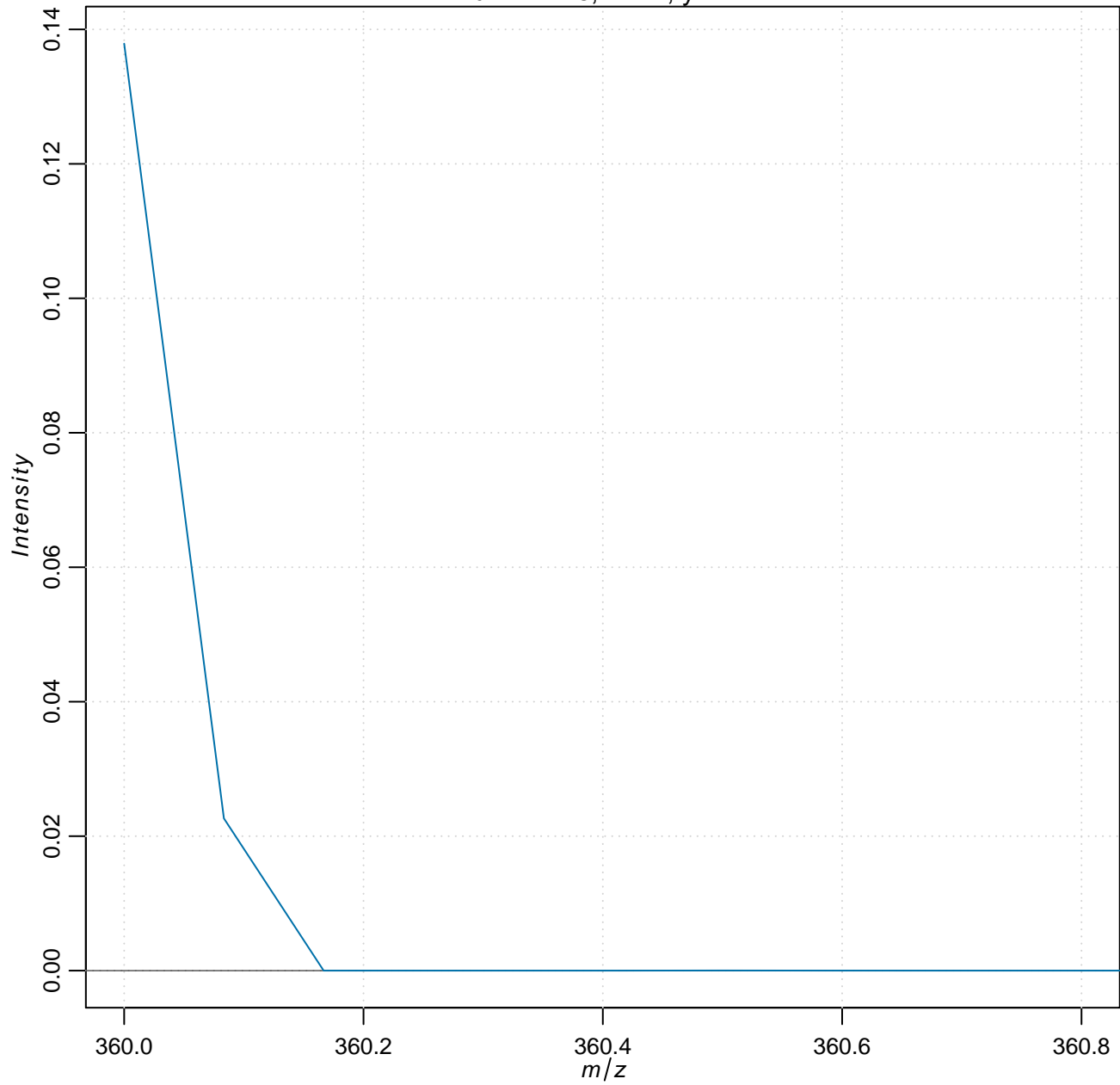


run = infile, x = 2, y = 2

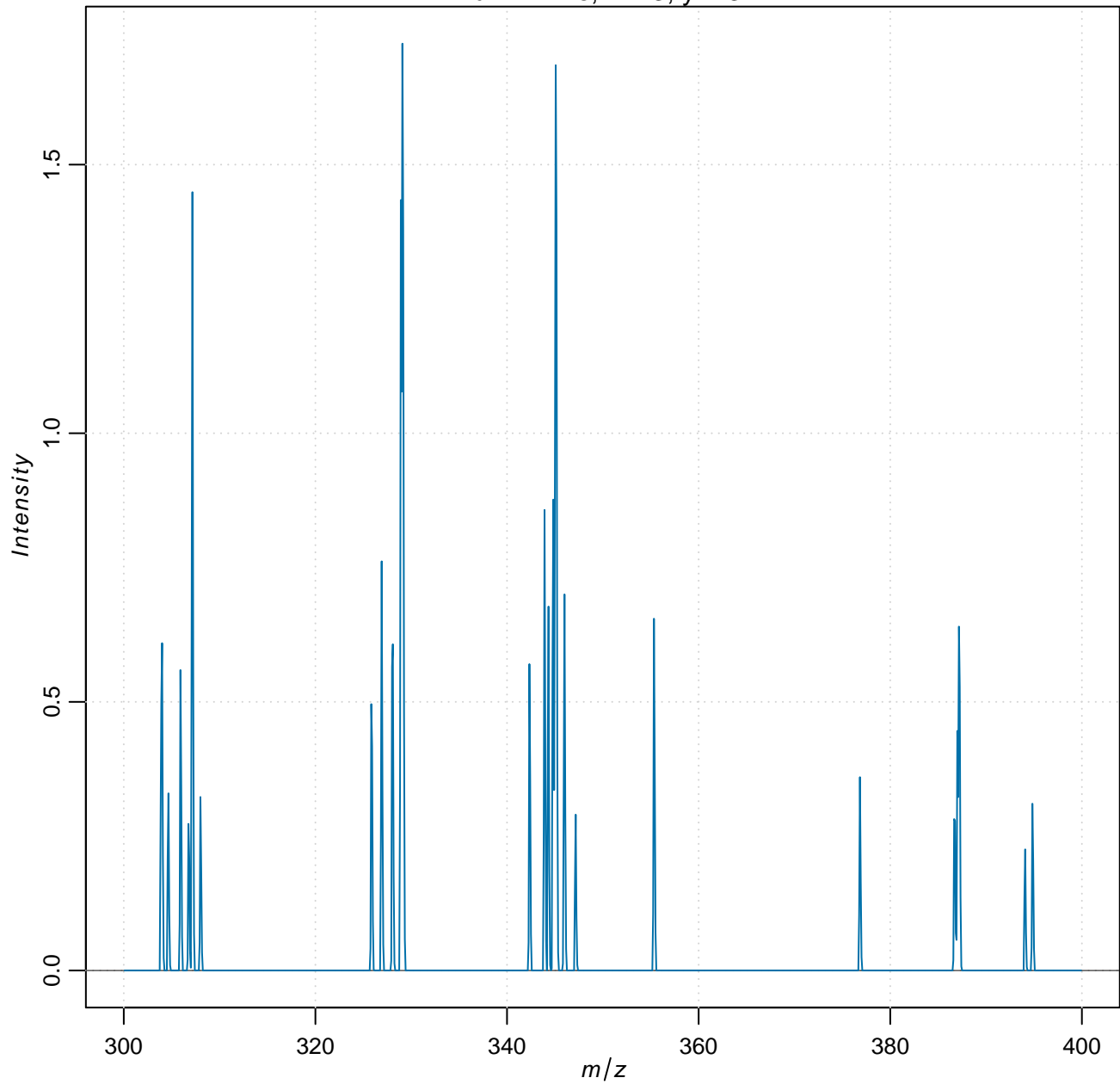




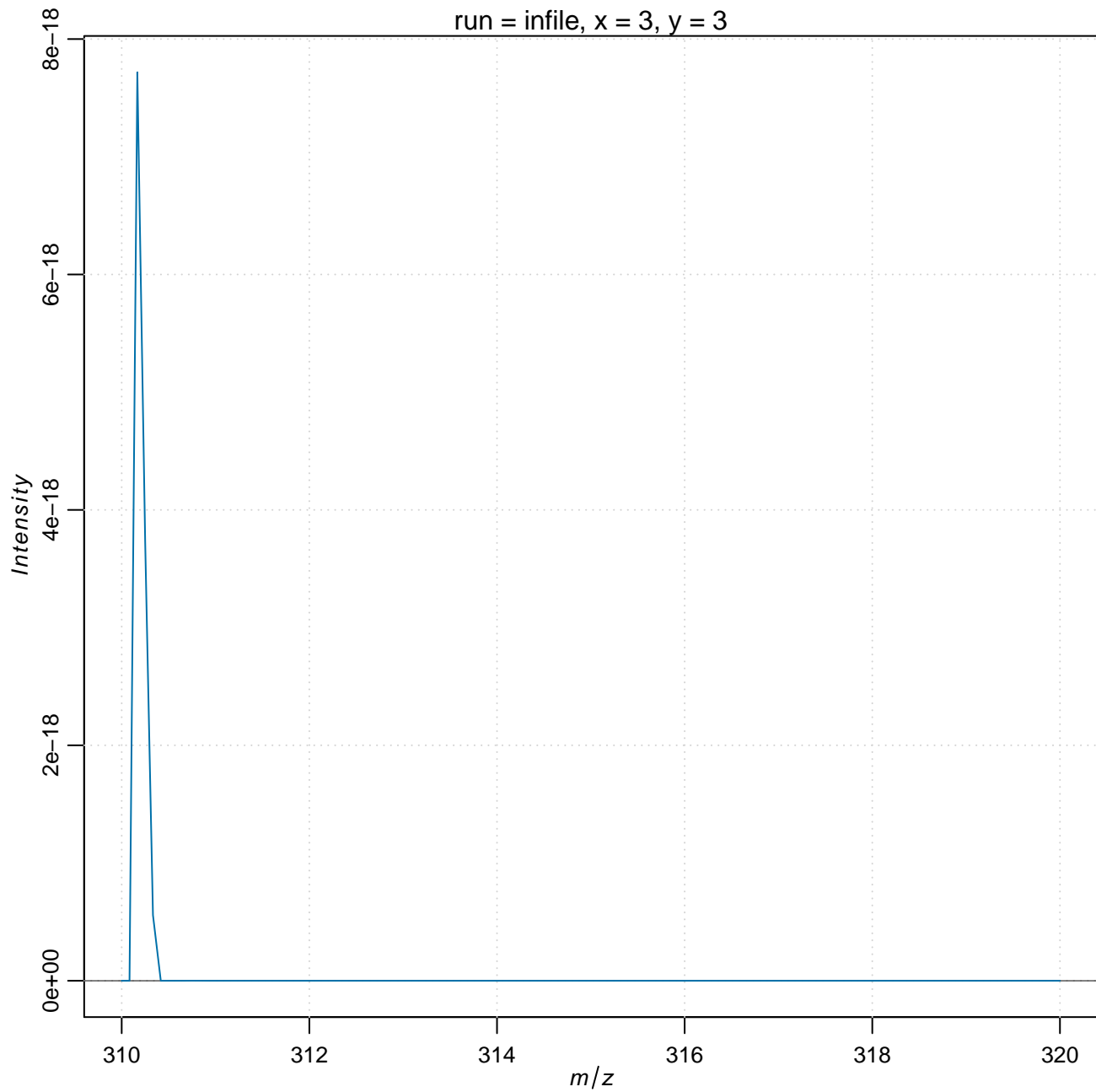
run = infile, x = 2, y = 2



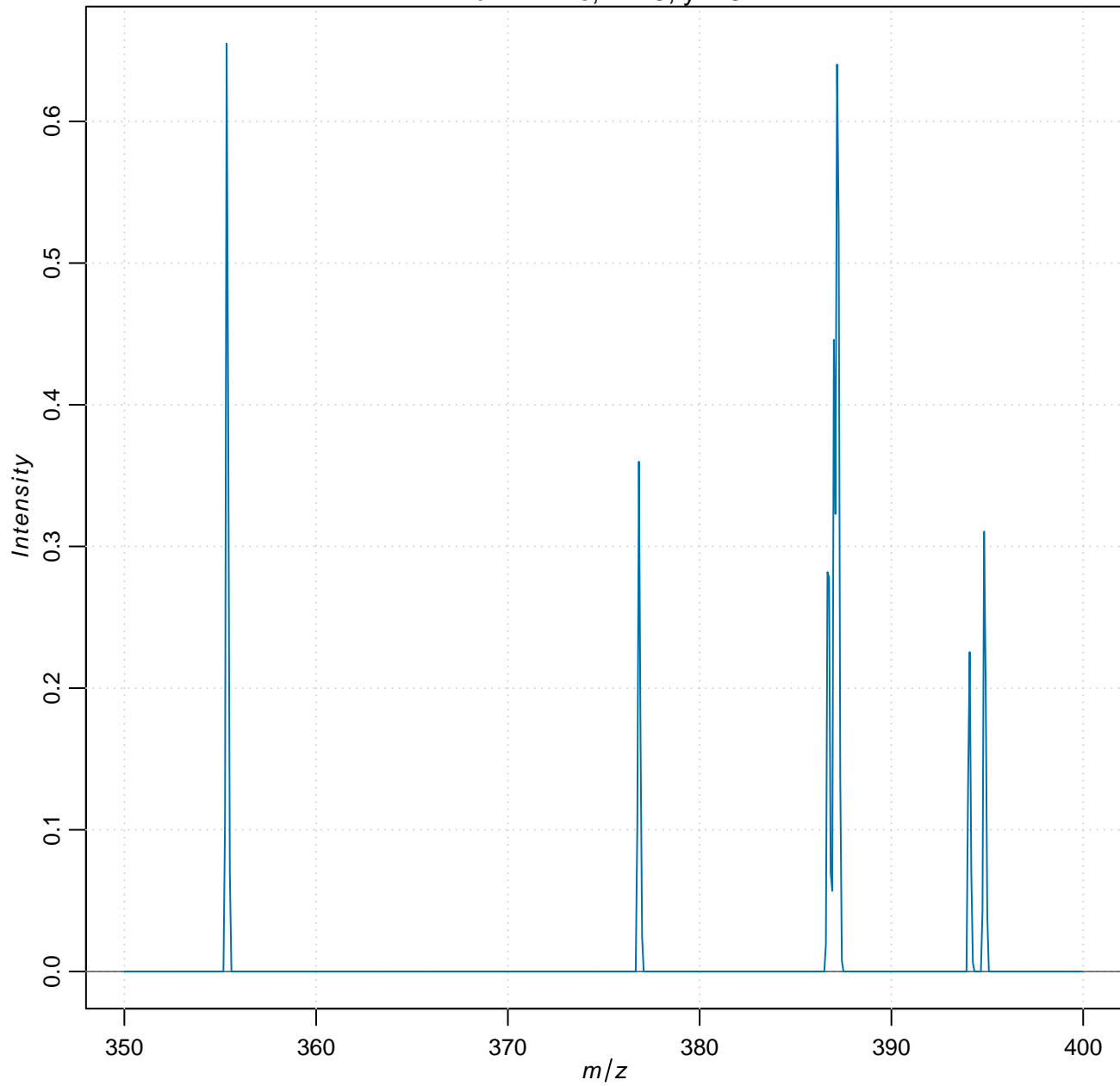
run = infile, x = 3, y = 3



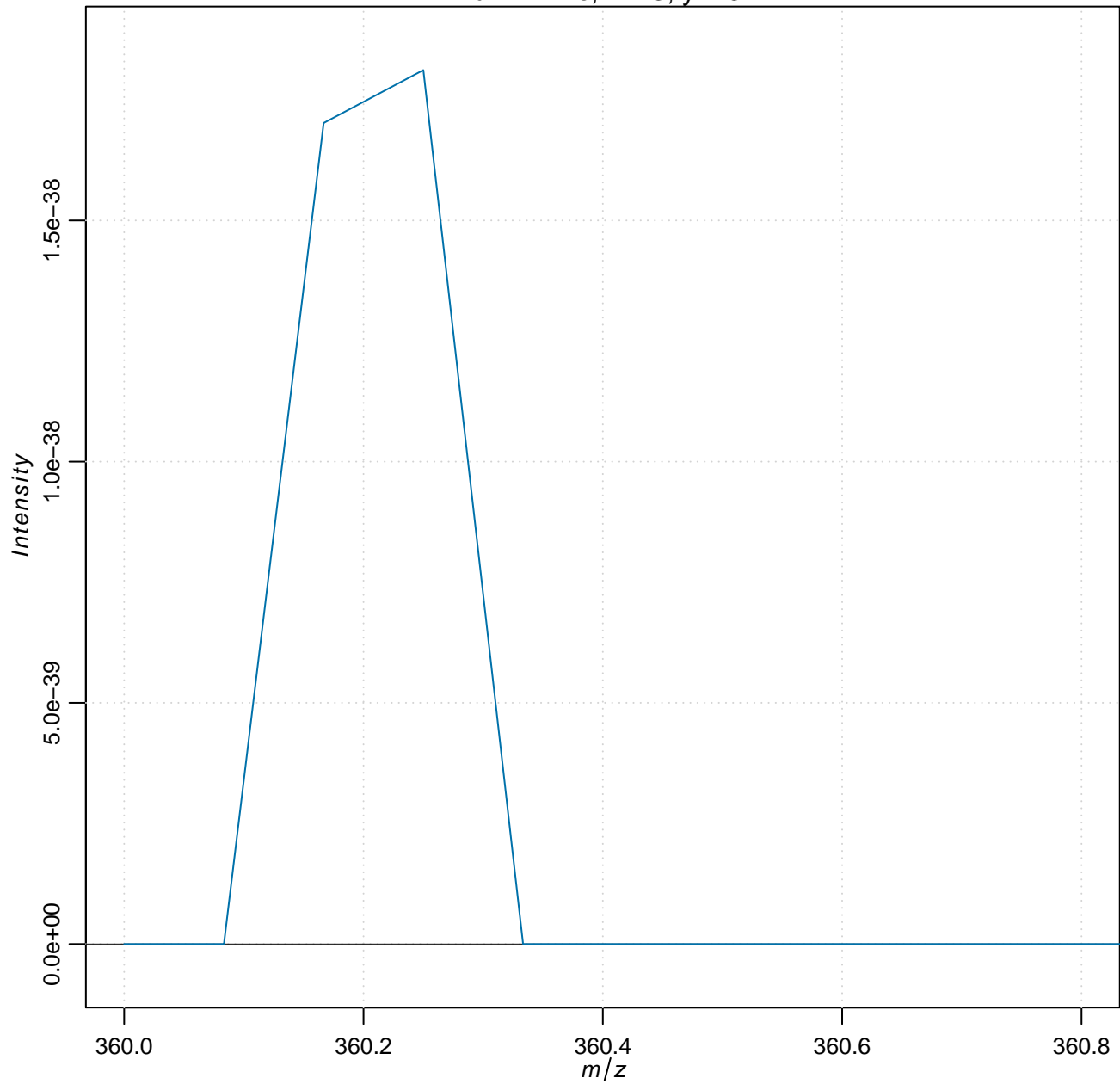
run = infile, x = 3, y = 3



run = infile, x = 3, y = 3



run = infile, x = 3, y = 3



## Overview of chosen pixel:

<b>pixel coordinates</b>	<b>coordinates were found in this file</b>
x = 1, y = 1	TRUE
x = 2, y = 2	TRUE
x = 3, y = 3	TRUE