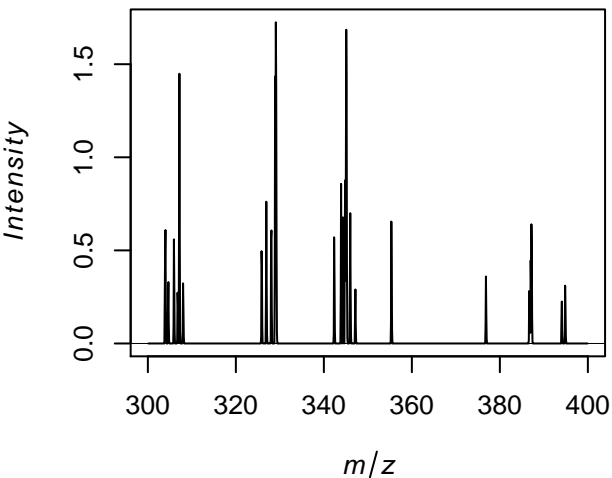


**Quality control during preprocessing**

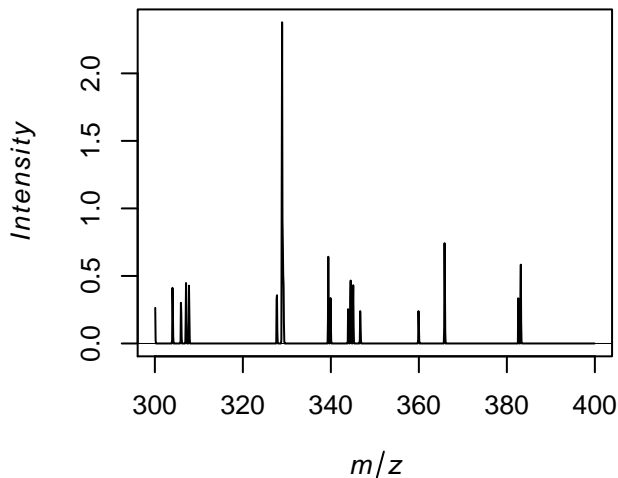
**Filename: Example\_Continuous.i**

# Input spectra

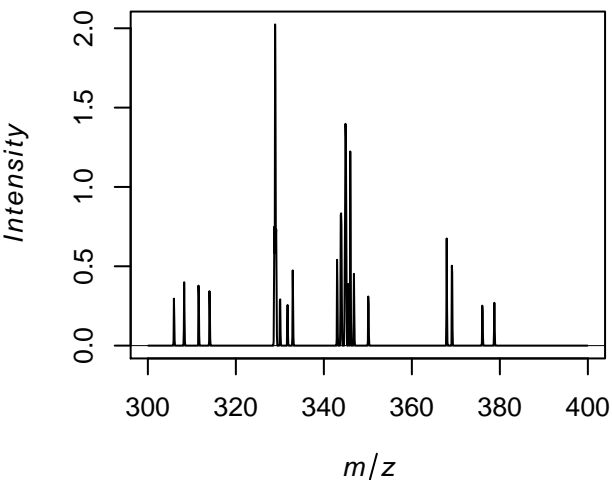
## spectrum x = 3, y = 3



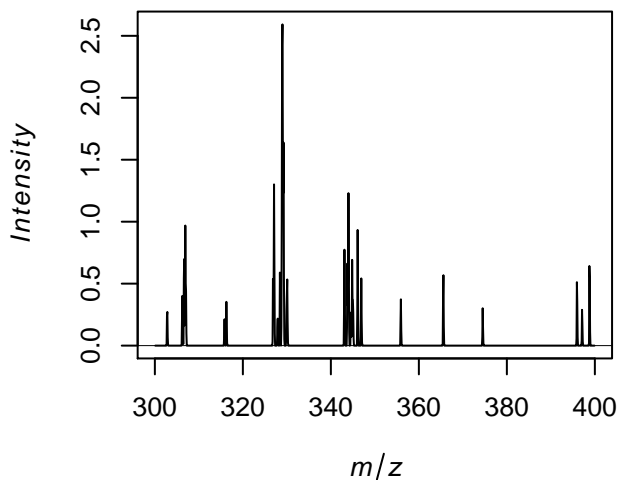
## spectrum x = 2, y = 2



## spectrum x = 2, y = 1

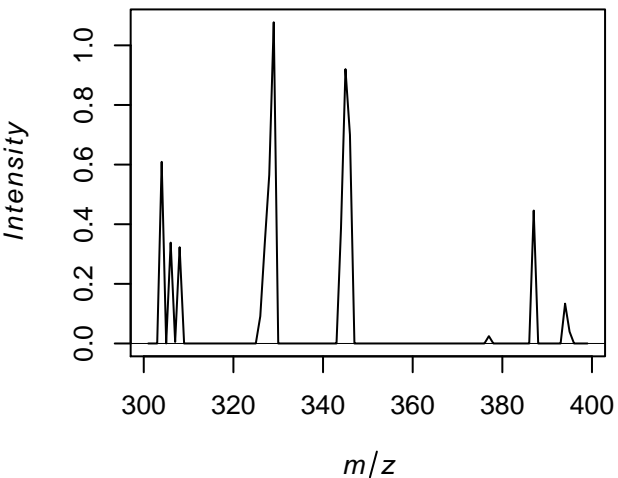


## spectrum x = 1, y = 2

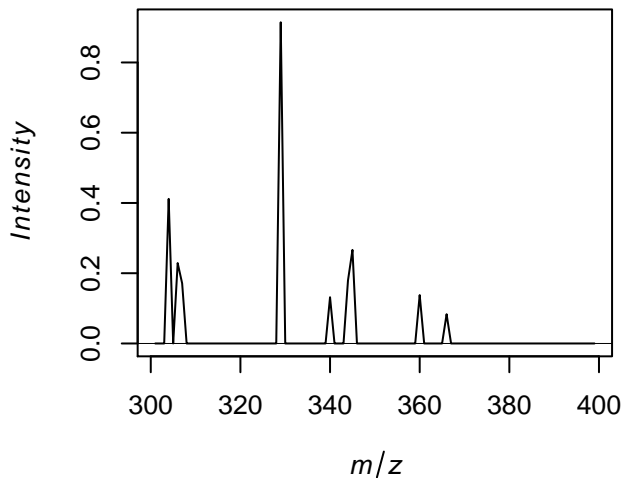


# Spectra after data reduction

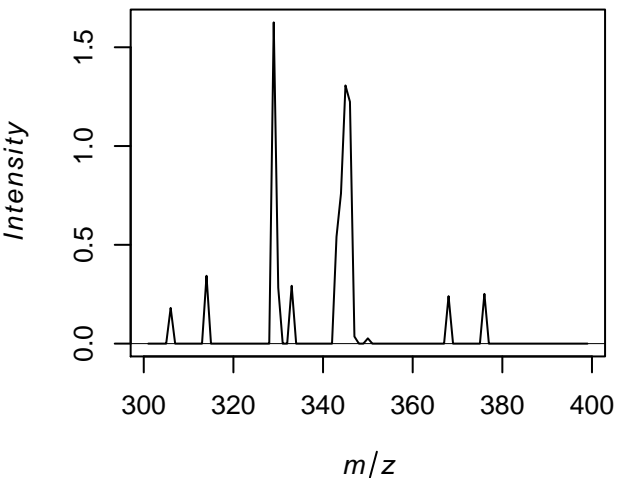
## spectrum x = 3, y = 3



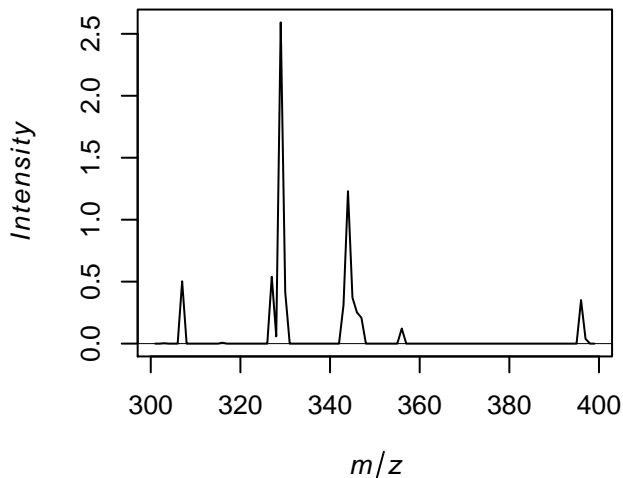
## spectrum x = 2, y = 2



## spectrum x = 2, y = 1



## spectrum x = 1, y = 2



	<b>min m/z</b>	<b>max mz</b>	<b># features</b>	<b># spectra</b>
<i>inputdata</i>	300.08	399.92	1199	9
<i>reduced</i>	301	399	99	9