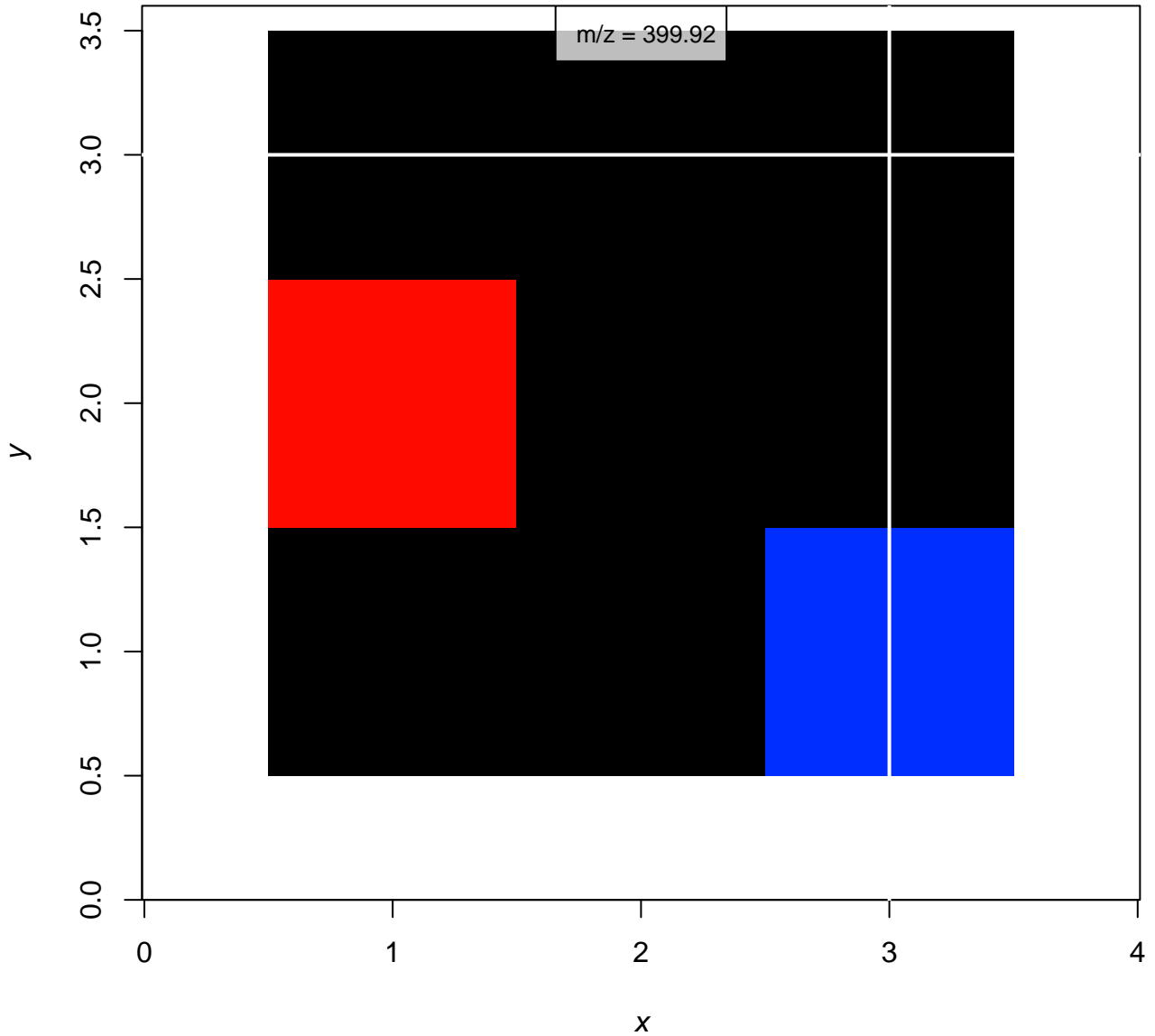


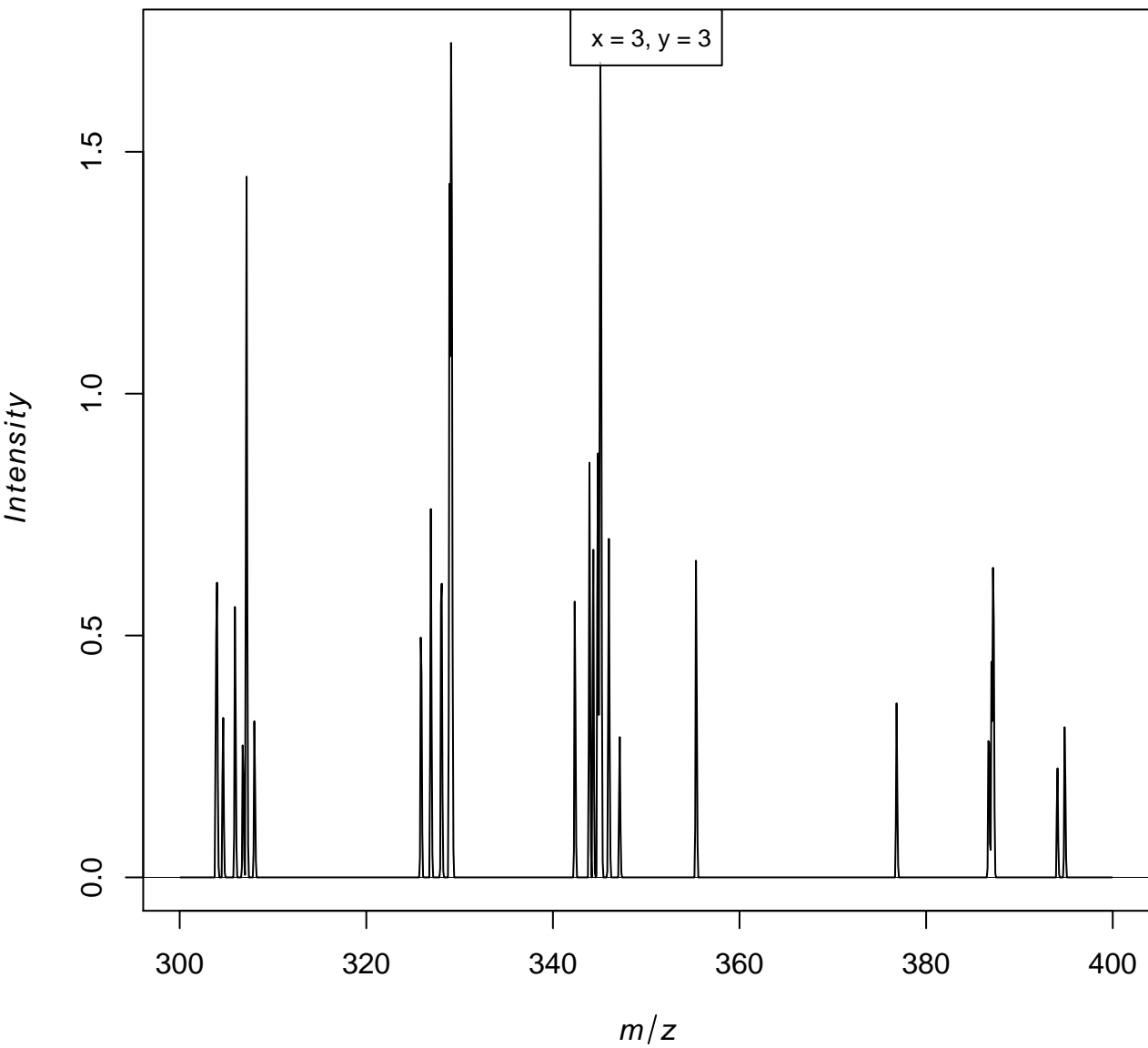
Mass spectra for file:

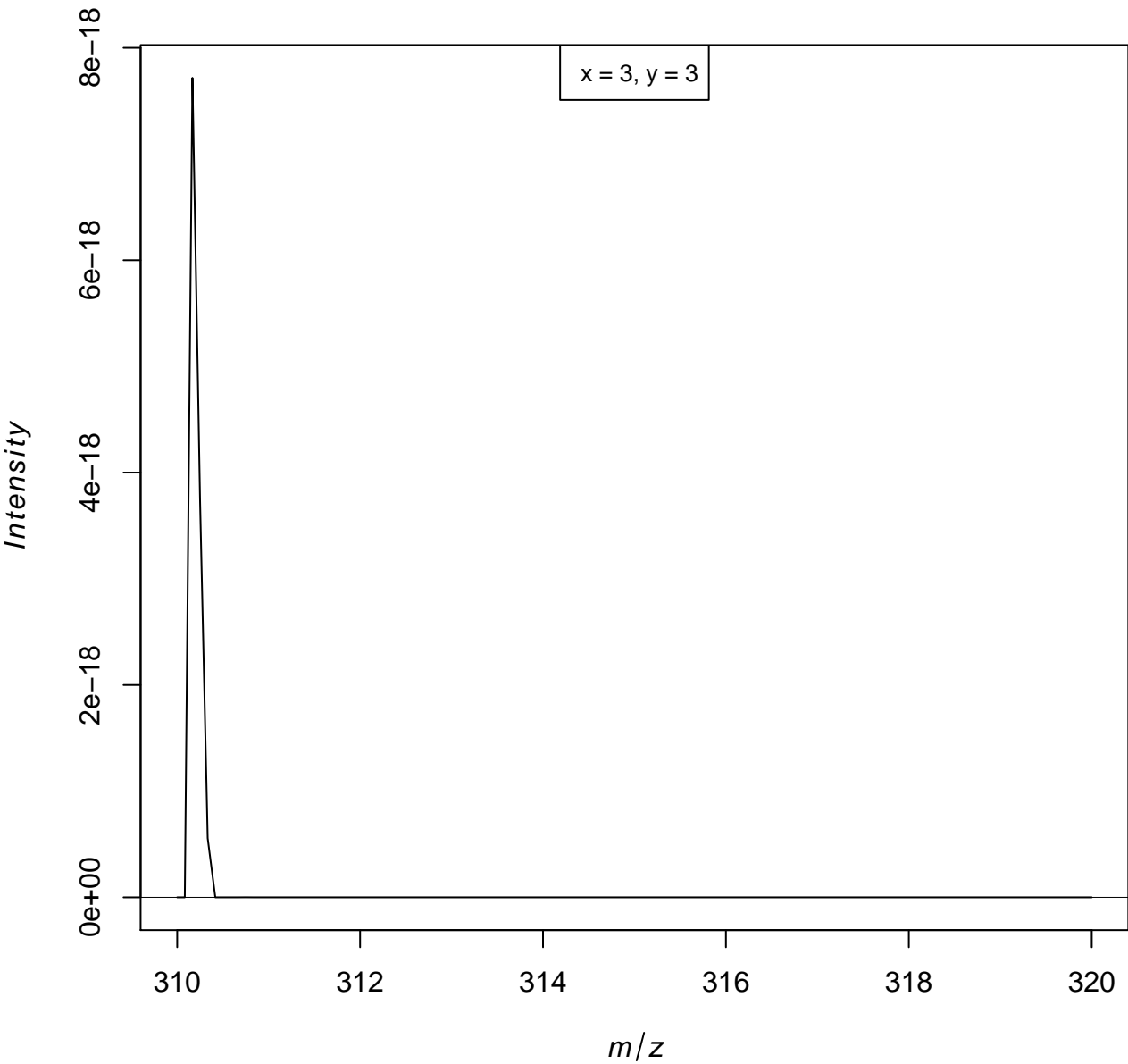
Uploaded Composite Dataset (imzml)

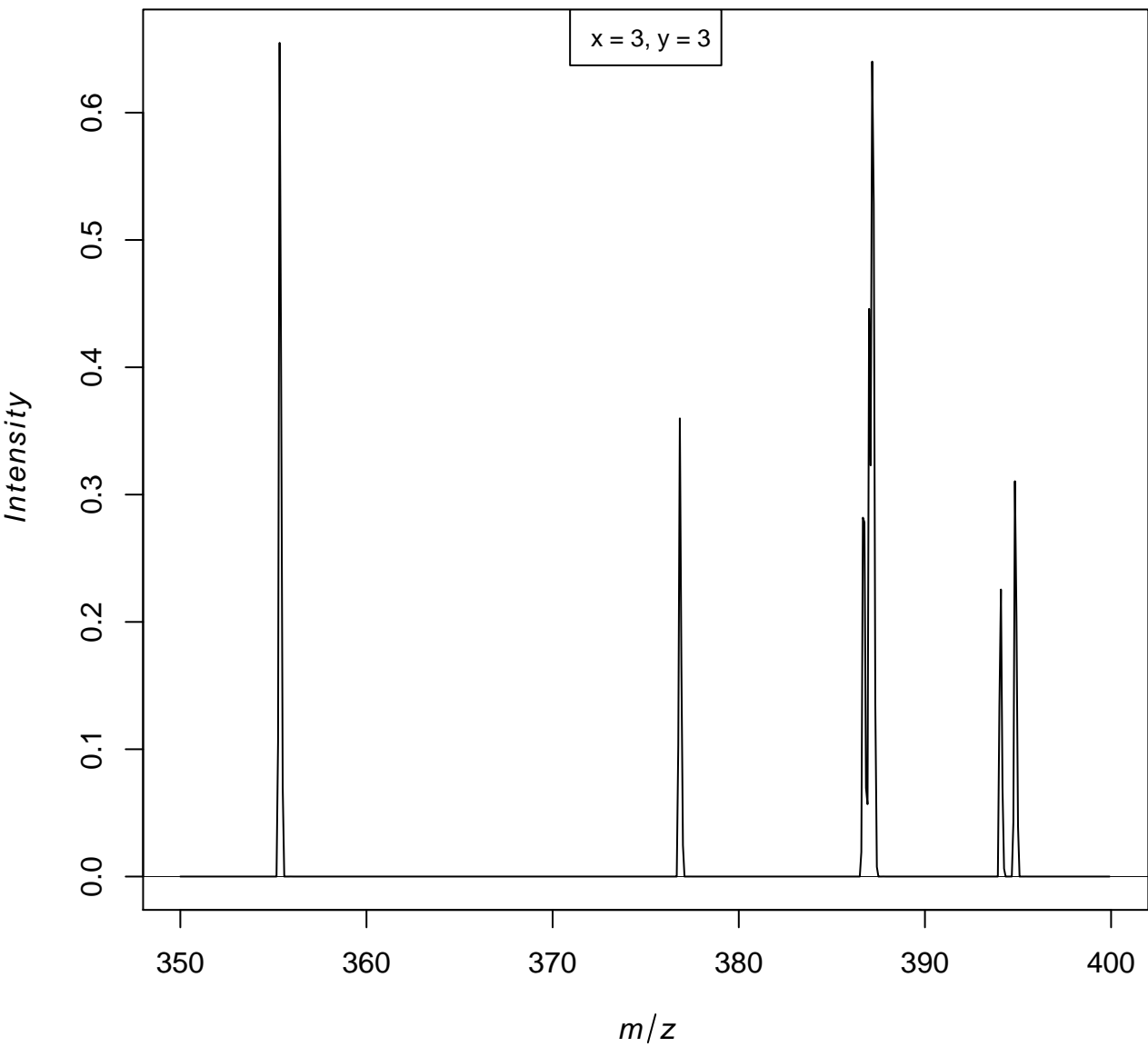
properties	values
Number of m/z features	1199
Range of m/z values	300.08 – 399.92
Number of pixels	9
Range of x coordinates	1 – 3
Range of y coordinates	1 – 3
Range of intensities	0 – 2.59
Median of intensities	0
Intensities > 0	26.17 %
Number of zero TICs	0
Preprocessing	
Normalization	FALSE
Smoothing	FALSE
Baseline reduction	FALSE
Peak picking	FALSE
Centroided	FALSE

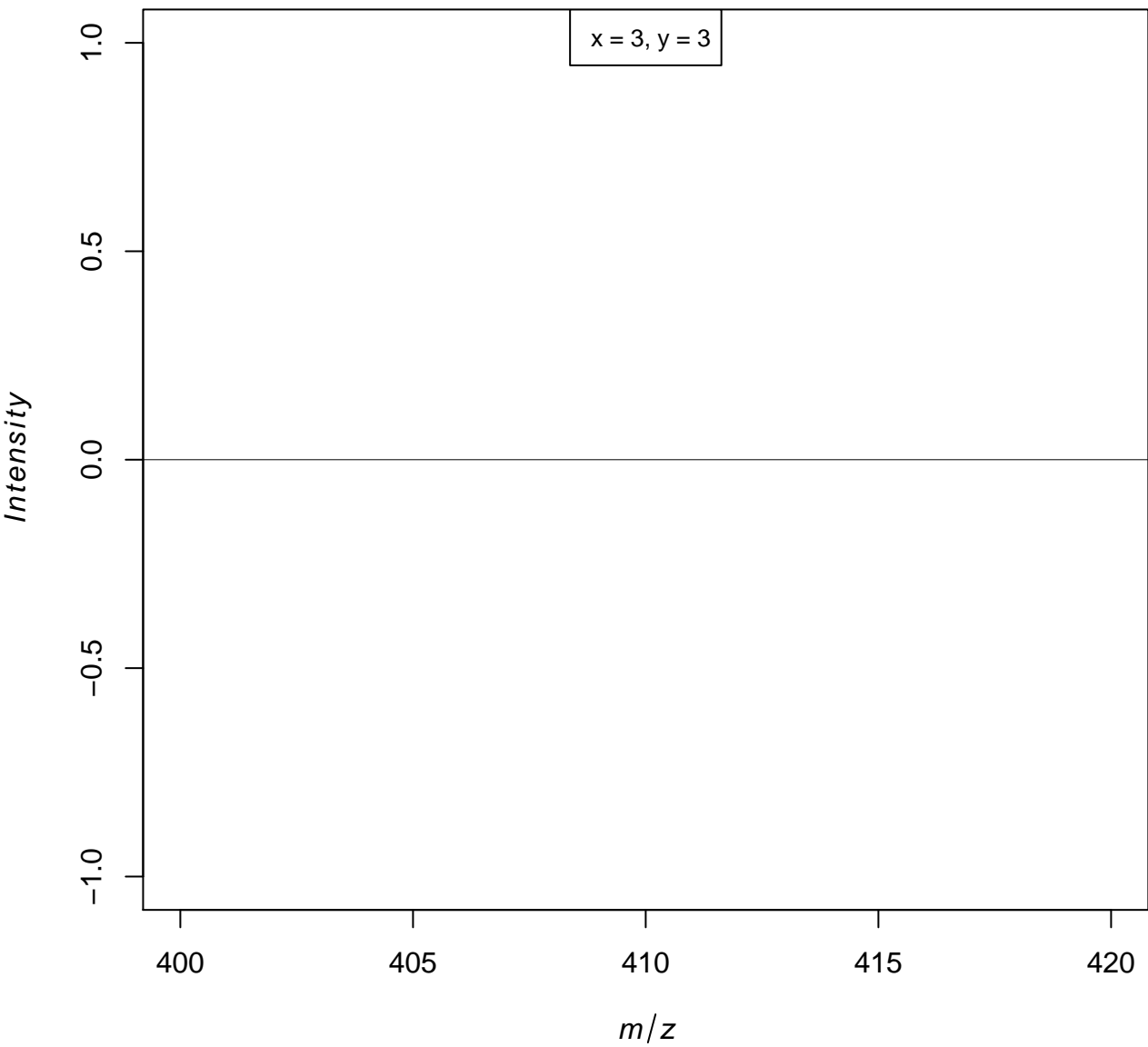
x= 3, y= 3



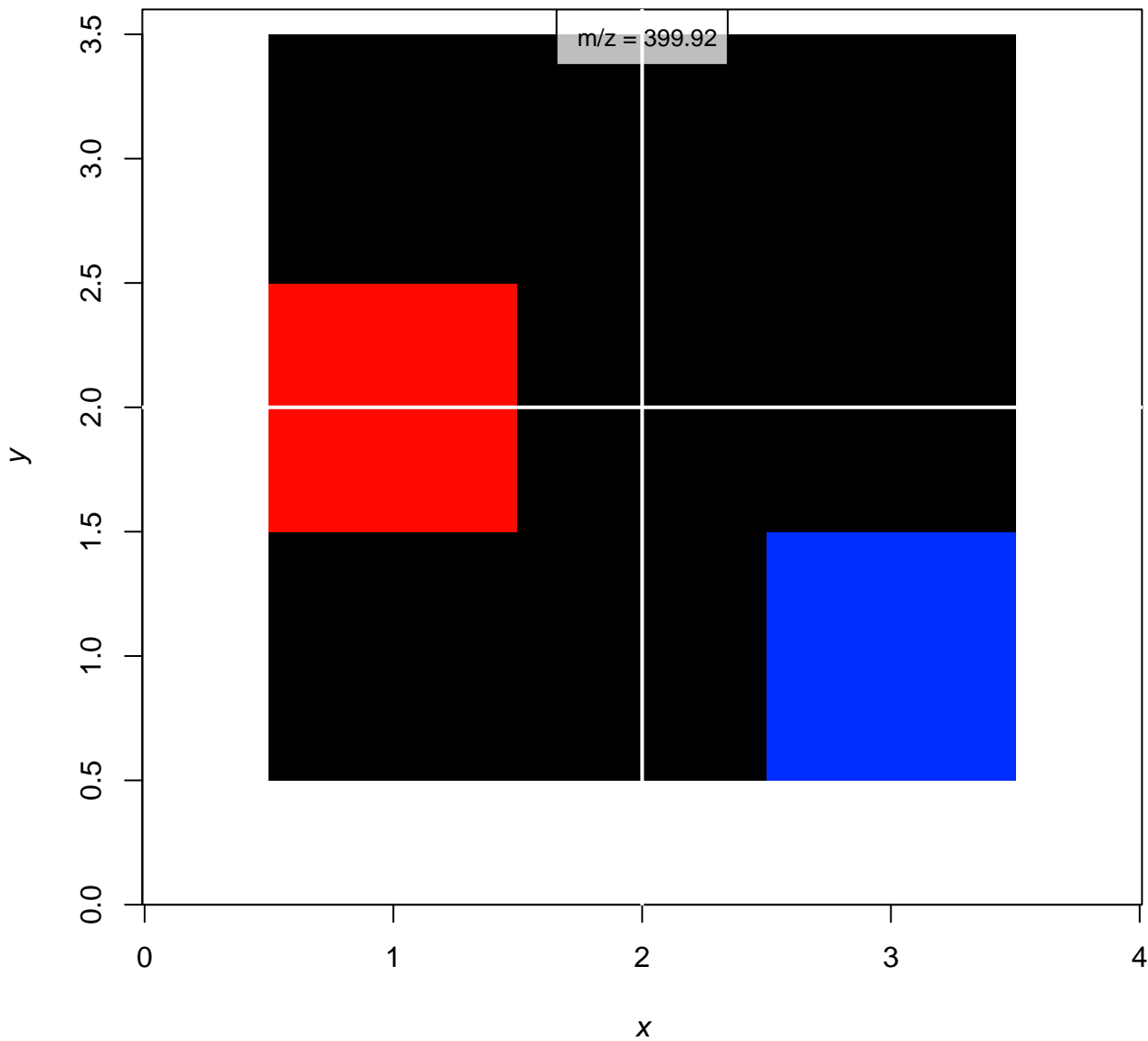


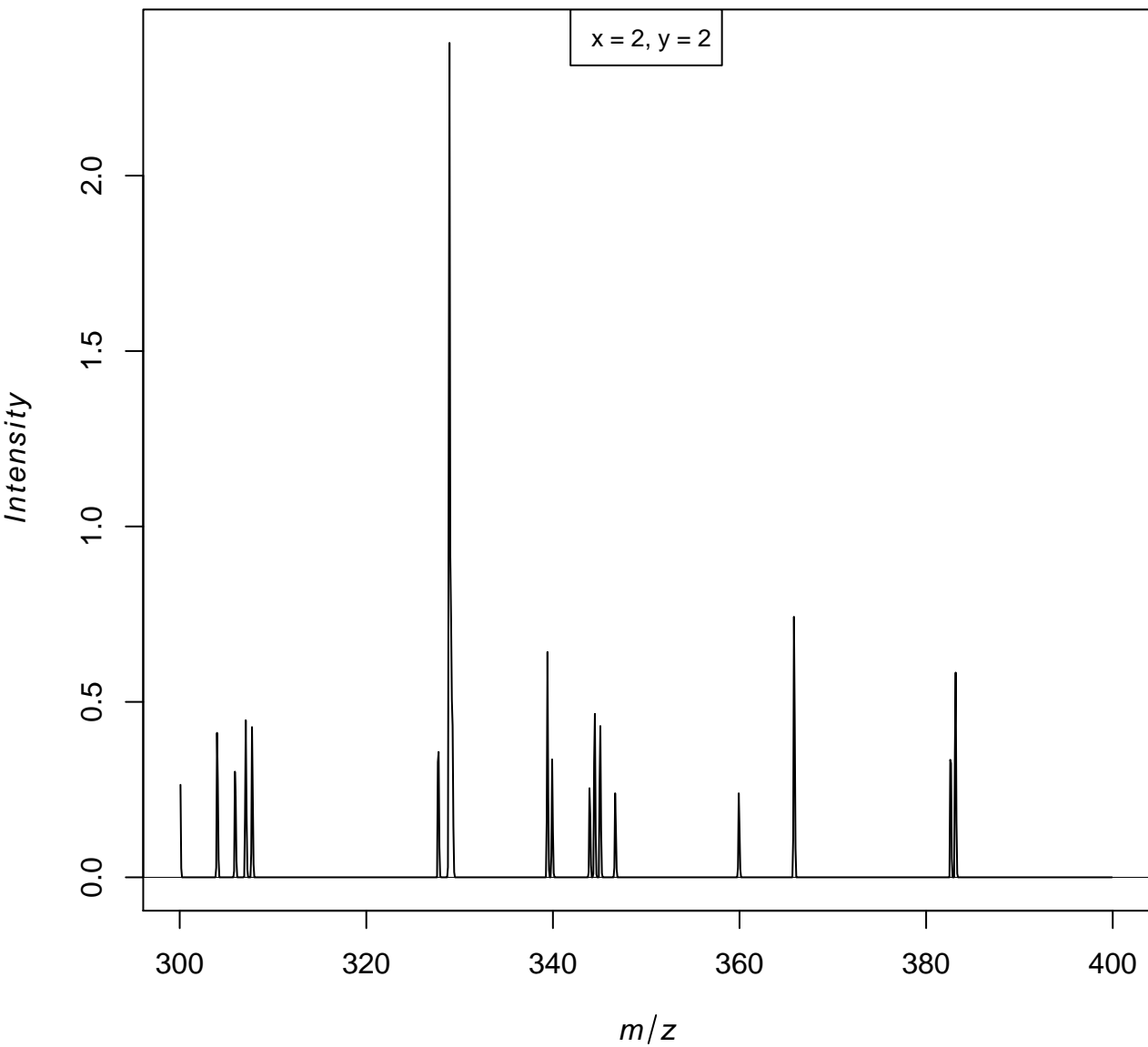




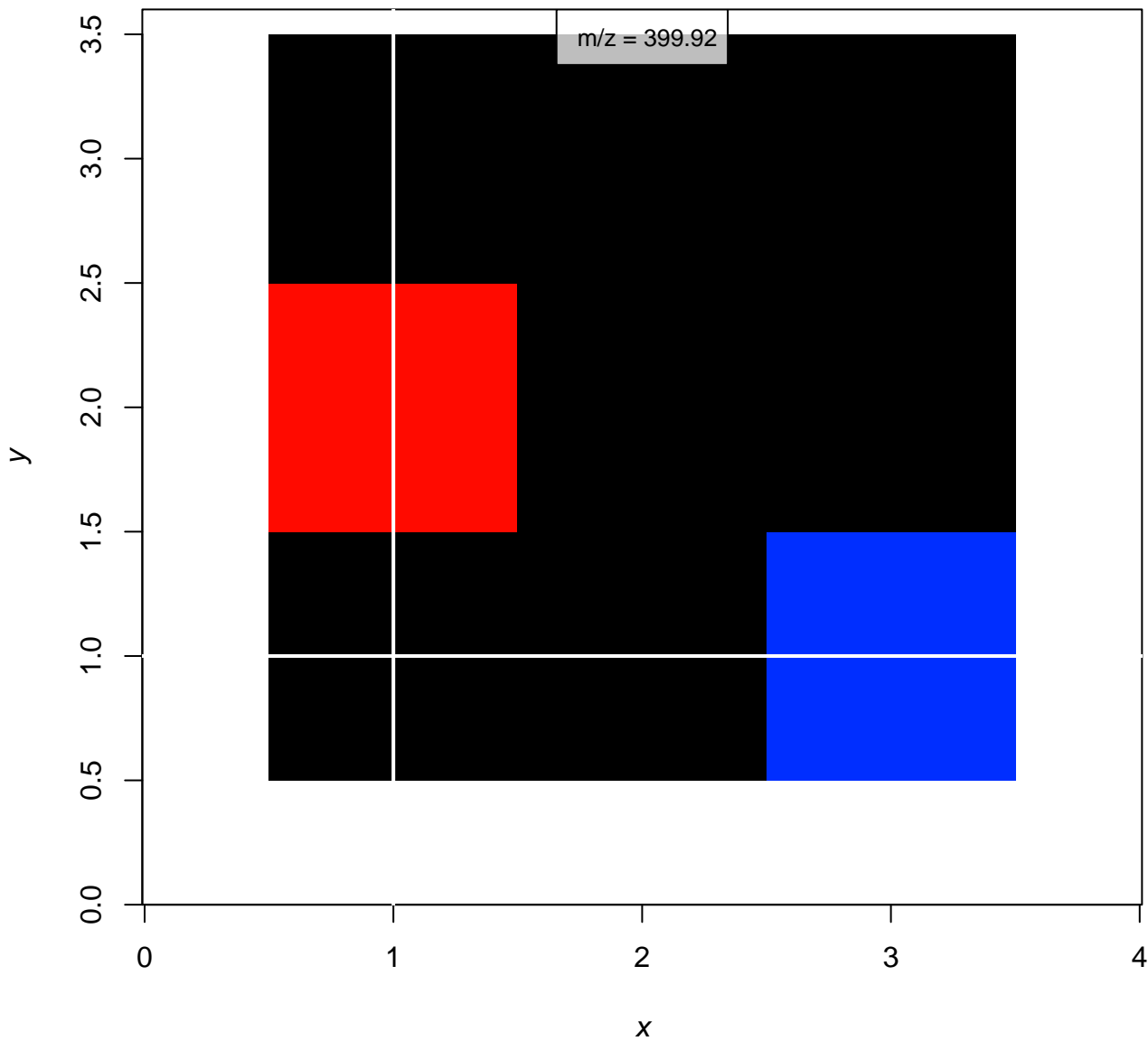


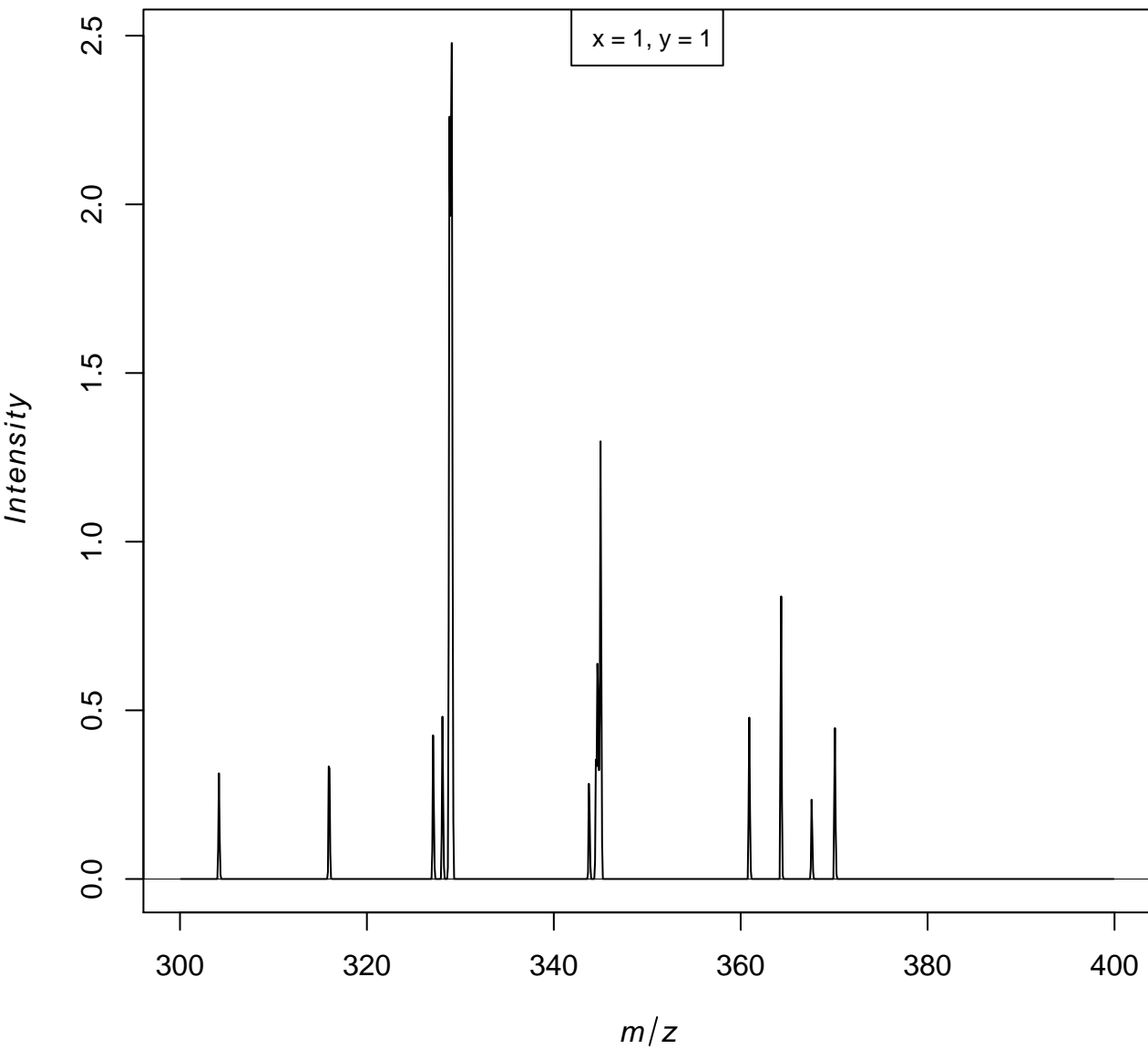
x= 2, y= 2





x= 1, y= 1





Overview of chosen pixel:

pixel coordinates	coordinates were found in this file
x=3, y=3	TRUE
x=2, y=2	TRUE
x=1, y=1	TRUE