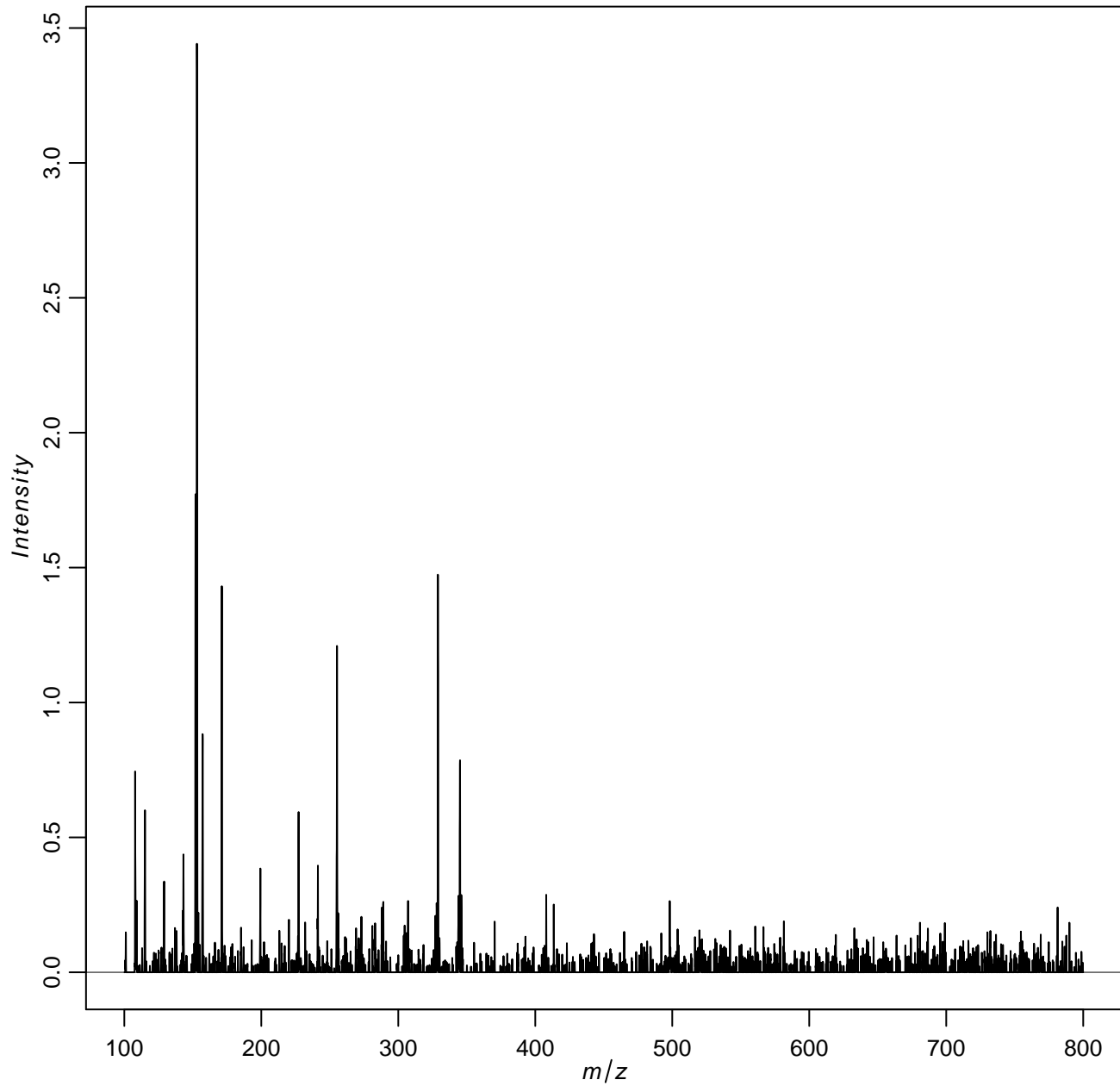


## Mass spectra for file:

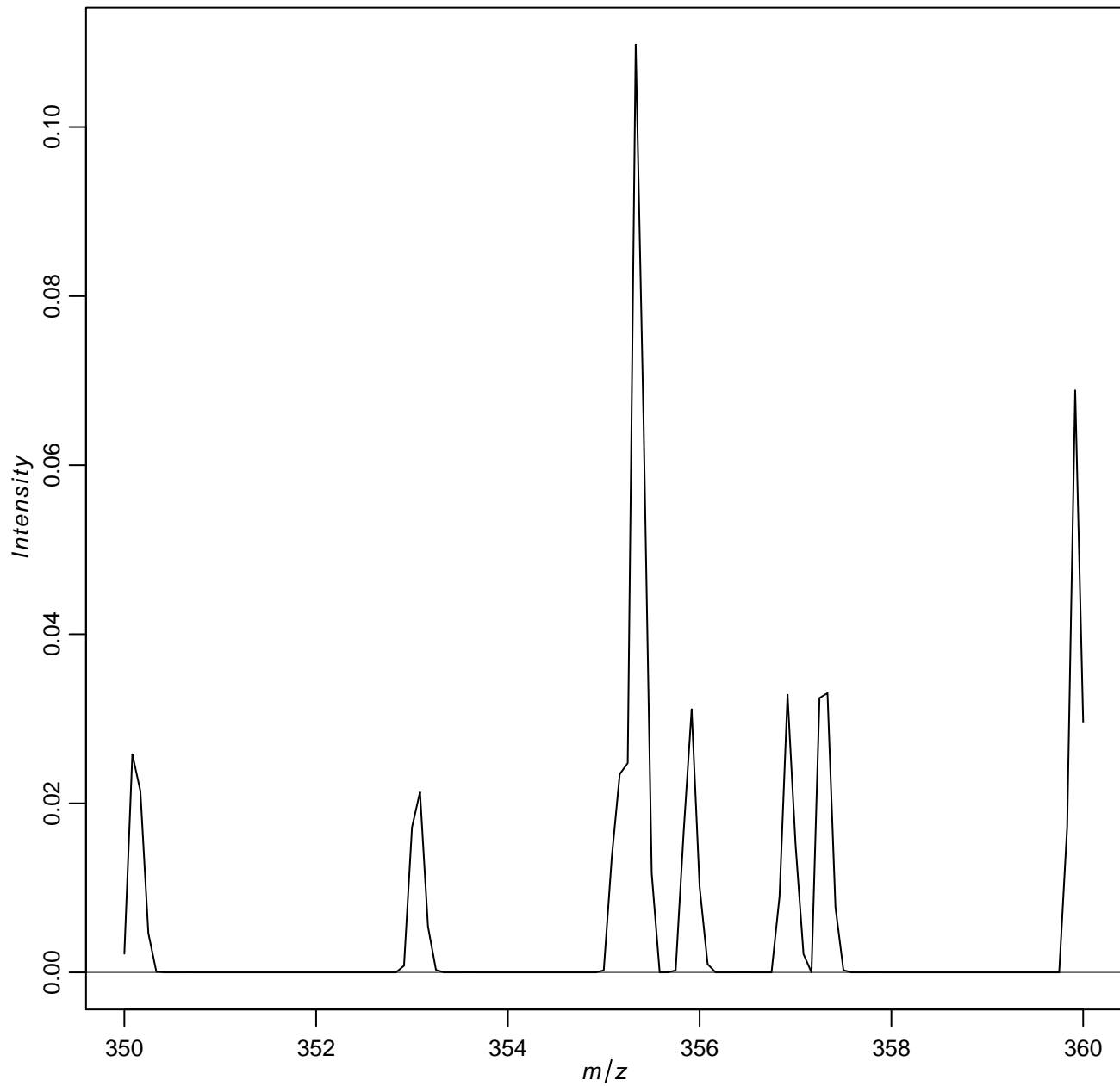
**3\_files\_combined.RData**

<b>properties</b>	<b>values</b>
Number of m/z features	8399
Range of m/z values	100.08 – 799.92
Number of pixels	12
Range of x coordinates	1 – 9
Range of y coordinates	1 – 3

# Average spectrum



# Average spectrum



## Overview of chosen pixel:

sample name	number of pixels
3_files_combined.RData	12