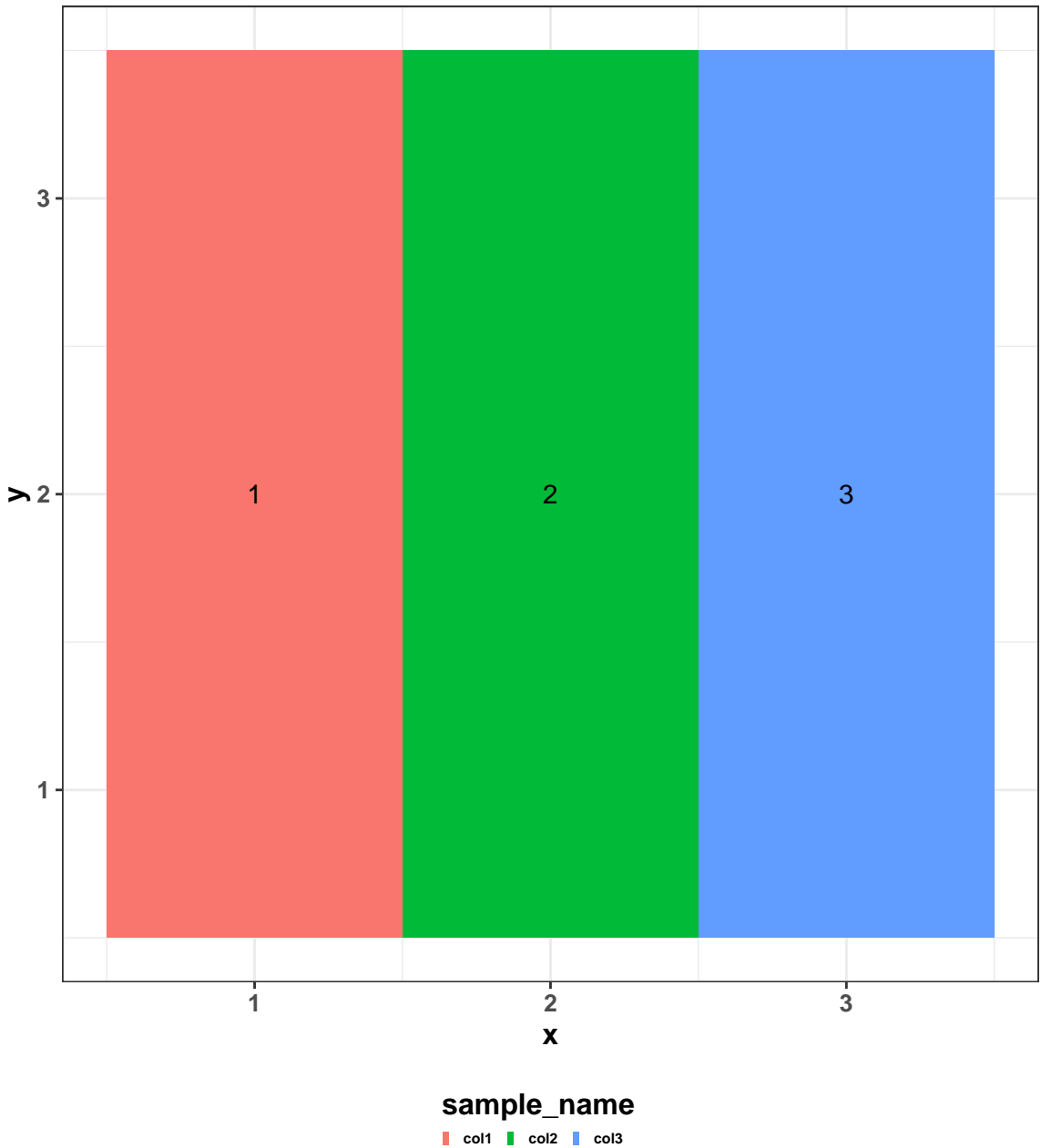


# Mass spectra for file:

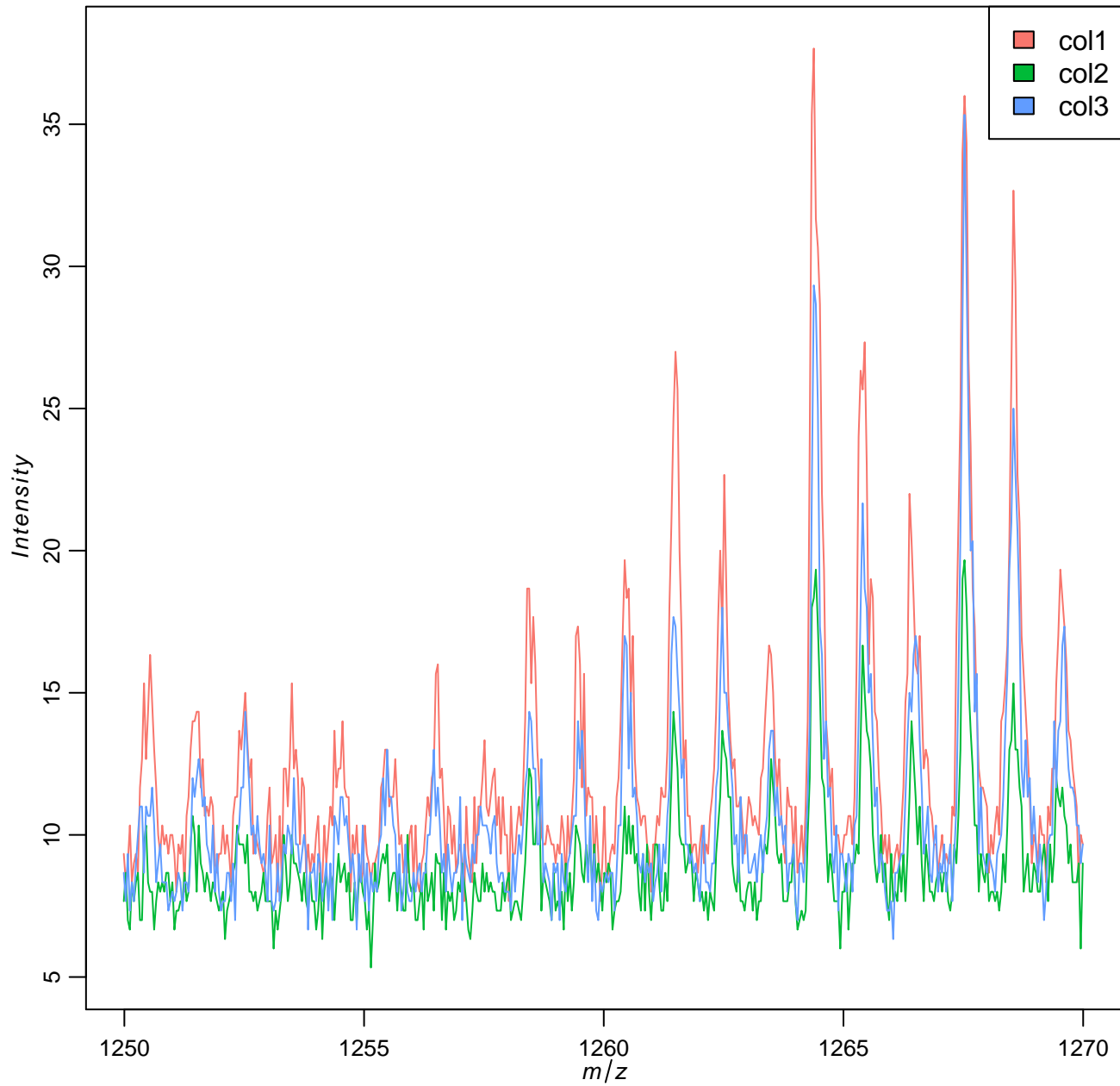
files\_

properties	values
Number of m/z features	3672
Range of m/z values	1199.47 – 1356.08
Number of pixels	9
Range of x coordinates	1 – 3
Range of y coordinates	1 – 3

# Spatial orientation of annotations



# Average spectrum per group



## Overview of chosen pixel:

sample name	number of pixels
col1	3
col2	3
col3	3