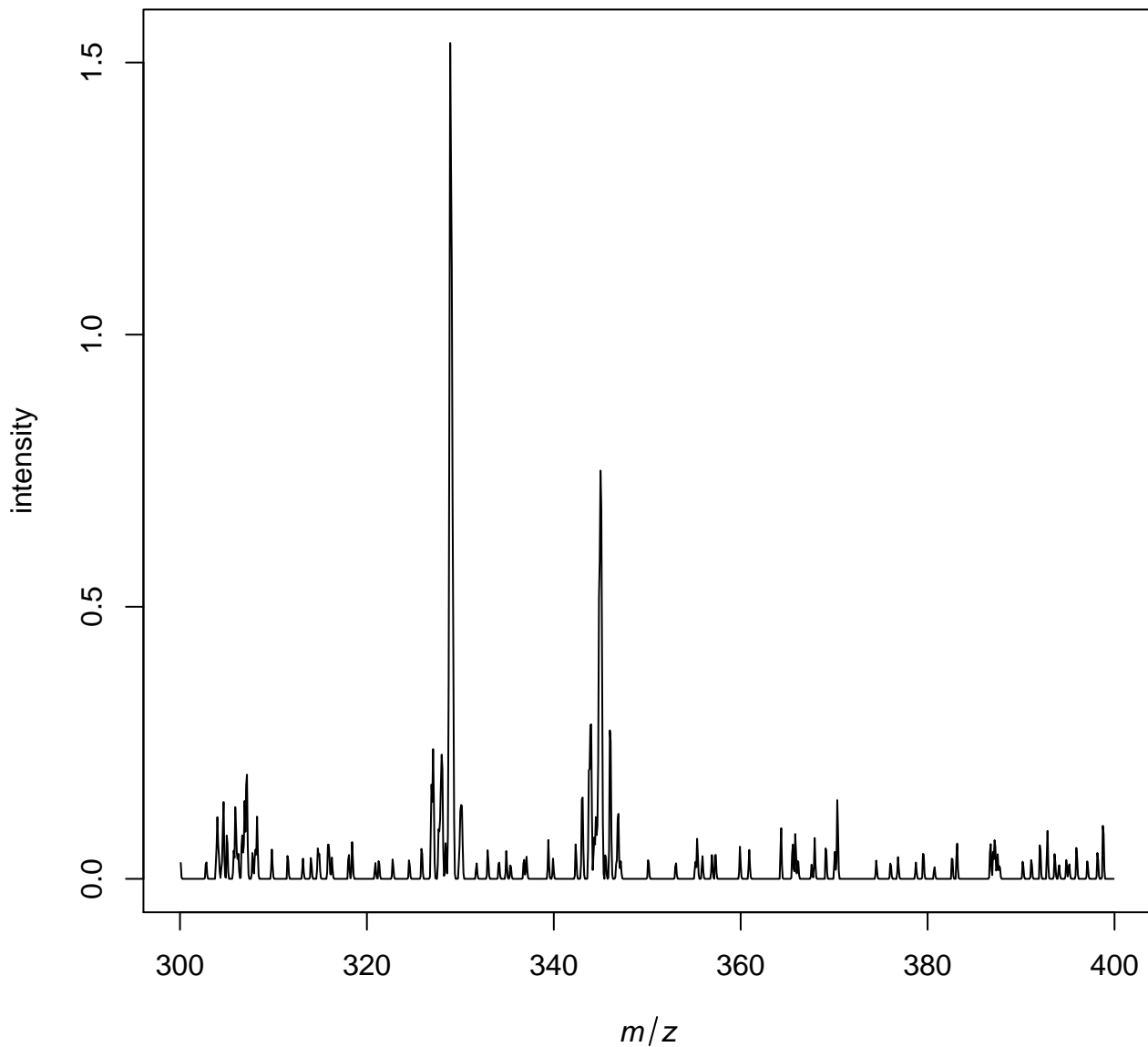
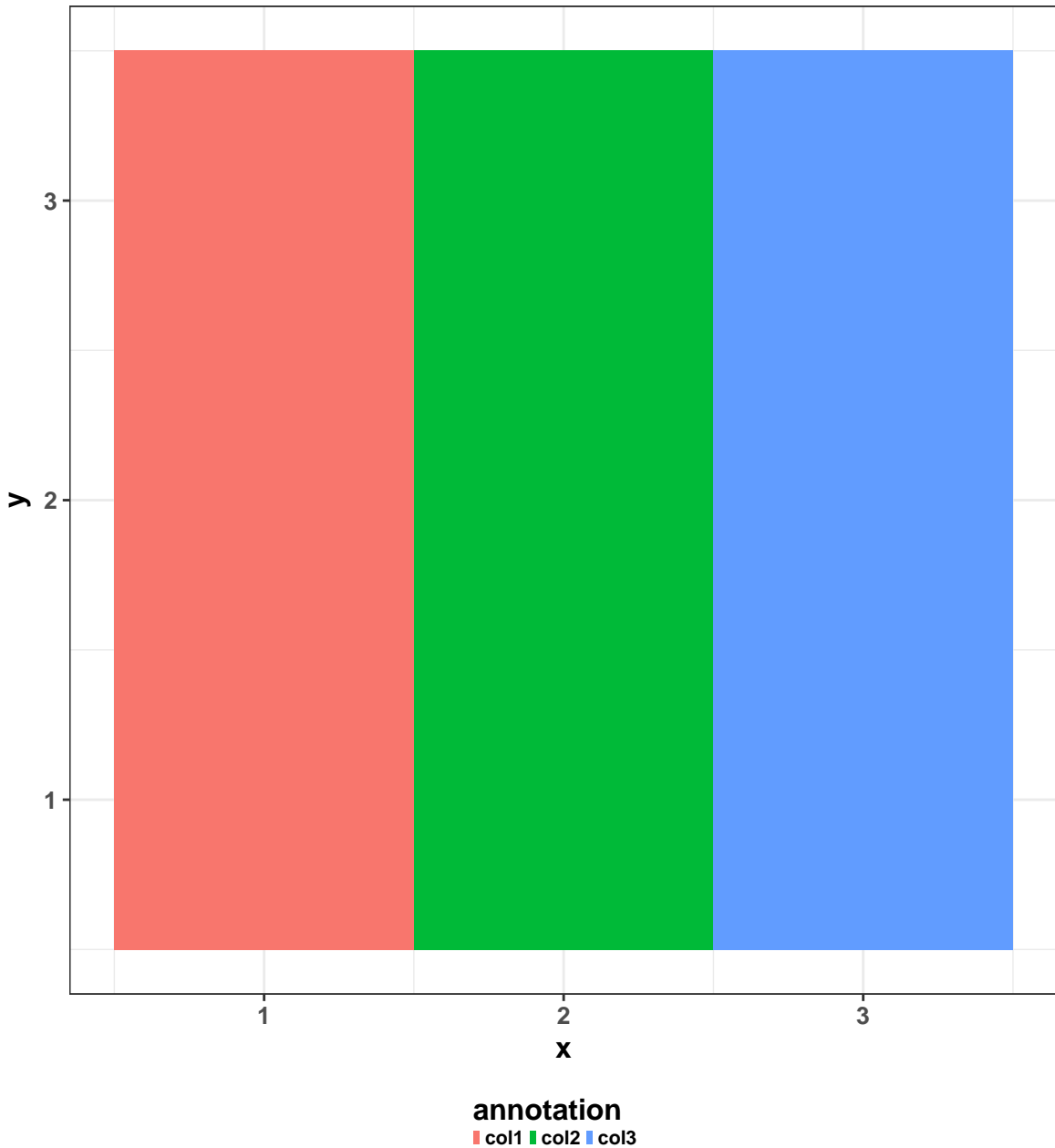


Example_Continuous.i

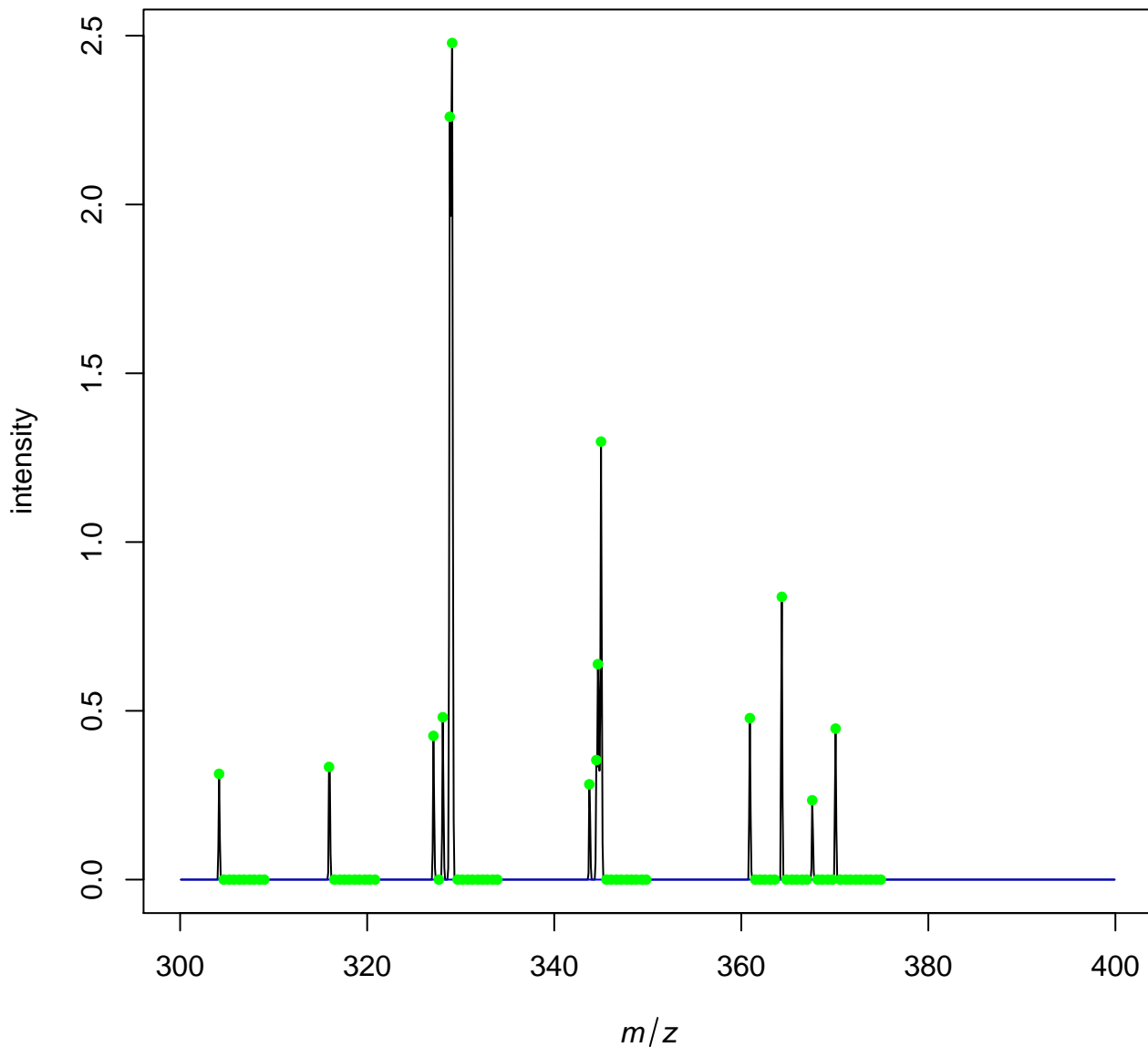
Average spectrum of input file



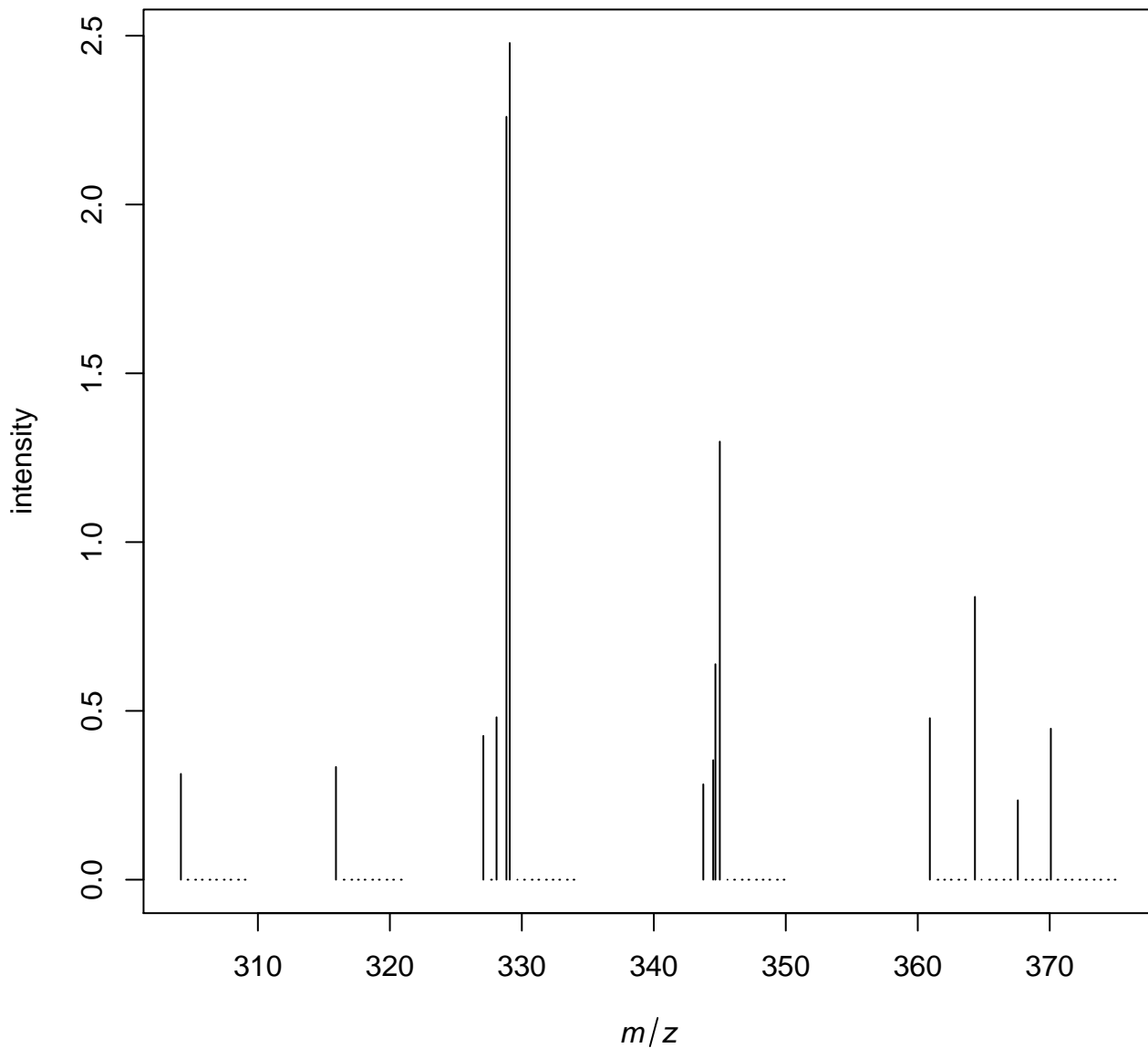
Spatial orientation of annotated data



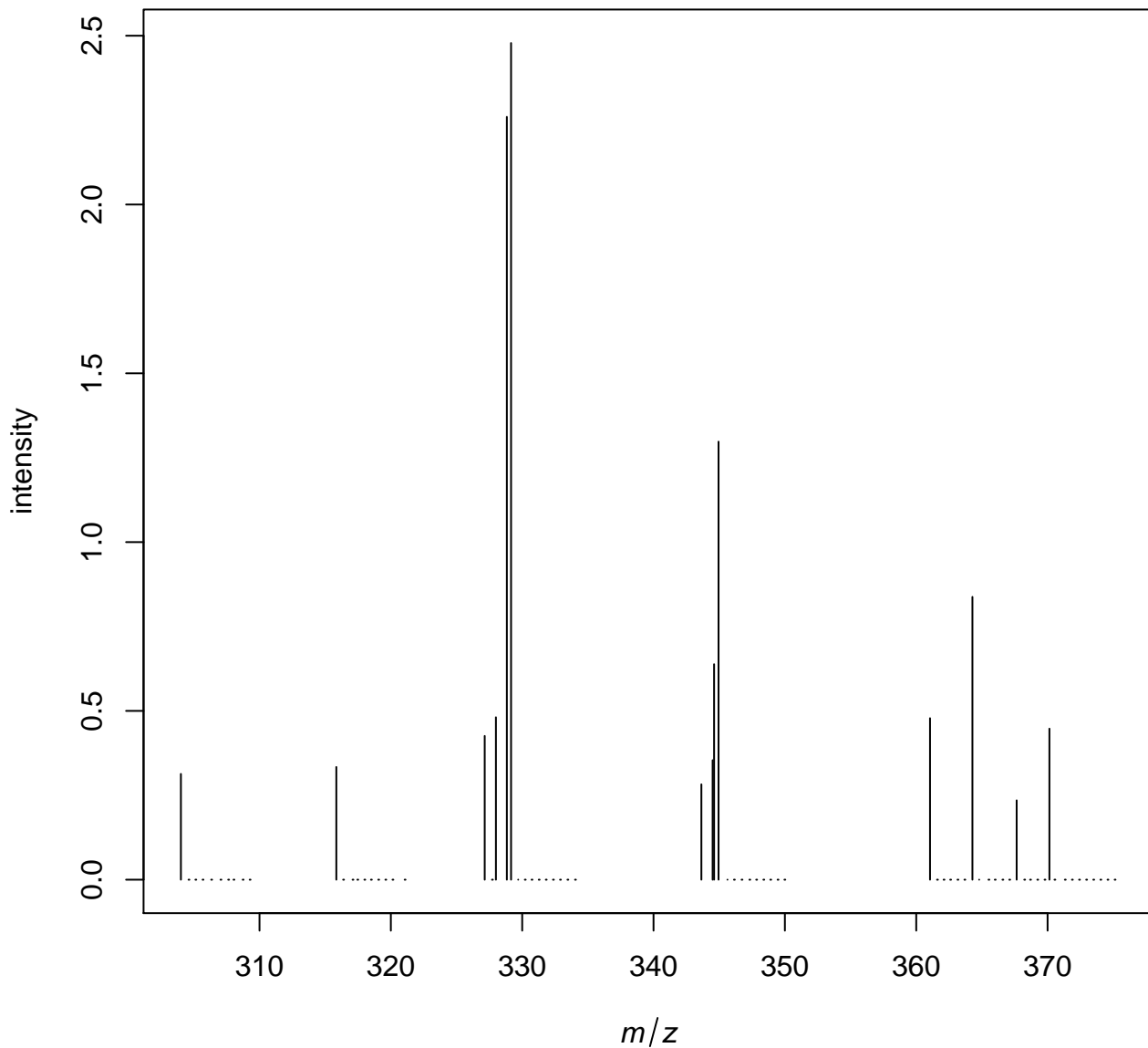
First spectrum with noise line (blue) and picked peaks (green)



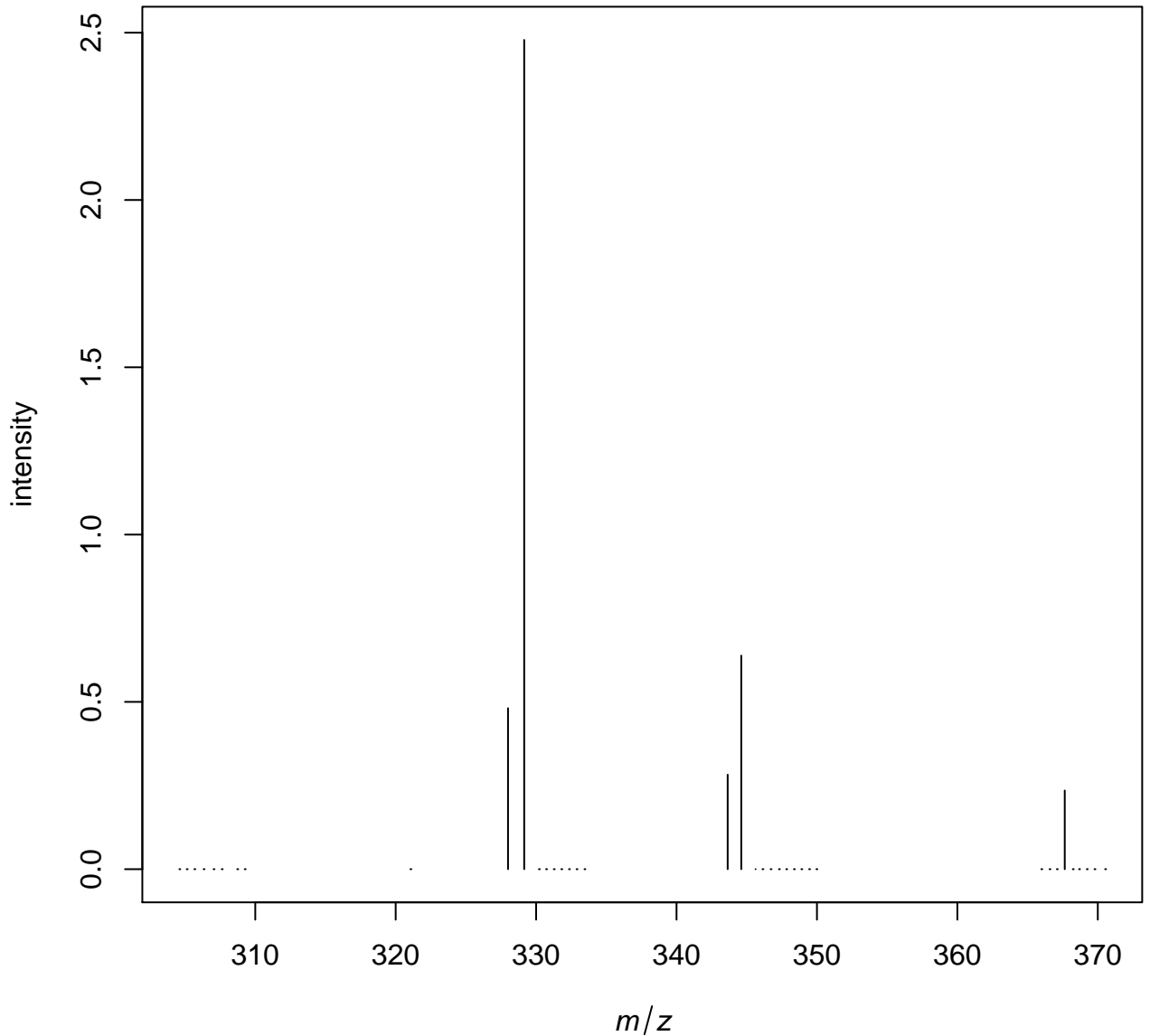
First spectrum after peak detection



First spectrum after binning



First spectrum after m/z filtering



| | min m/z | max mz | # features | median # features | median intensity |
|---------------------|----------------|---------------|-------------------|------------------------------|-----------------------------|
| <i>inputdata</i> | 300.0833 | 399.9167 | 1199 | 1199 | 0 |
| <i>peaks_picked</i> | 300.0833 | 399.8333 | 611 | 95.22 | 0 |
| <i>binned</i> | 300.1667 | 399.8333 | 235 | 95.22 | 0 |
| <i>filtered</i> | 304.5953 | 396.9167 | 60 | 33 | 0 |