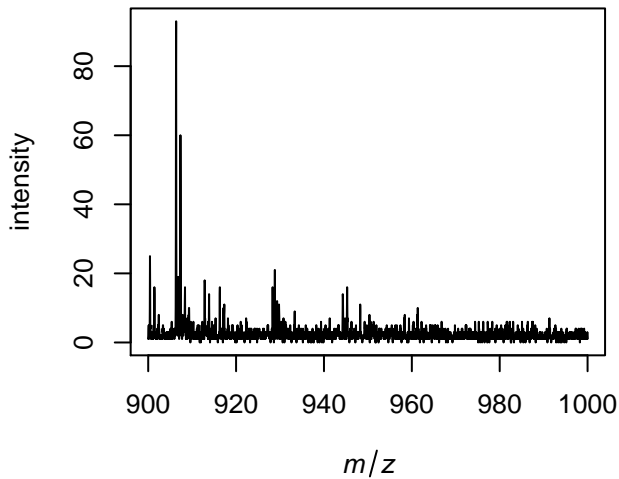


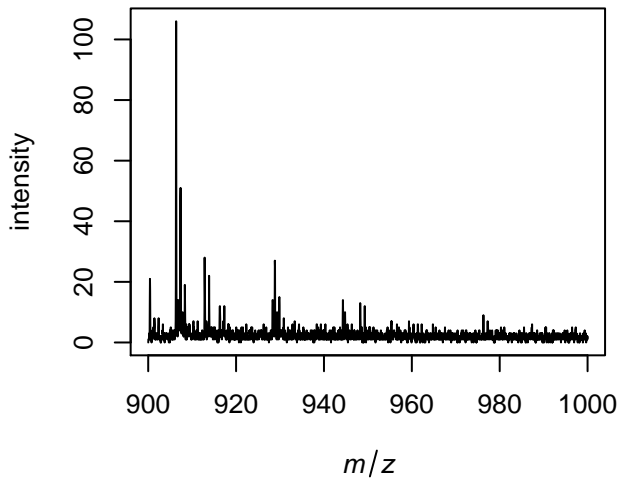
**testfile\_squares.rdata**

# Input spectra

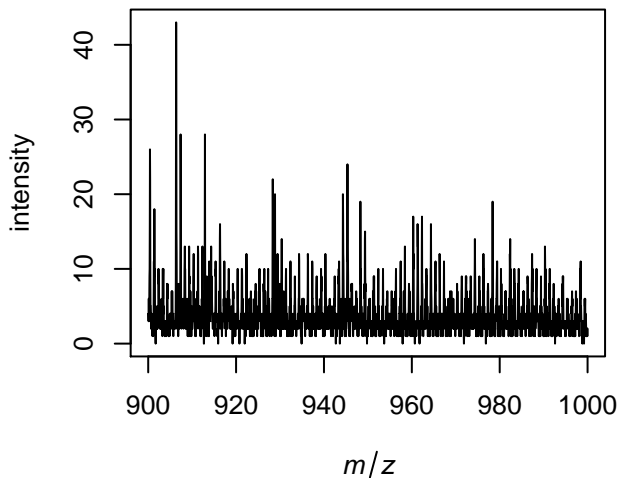
## spectrum 19



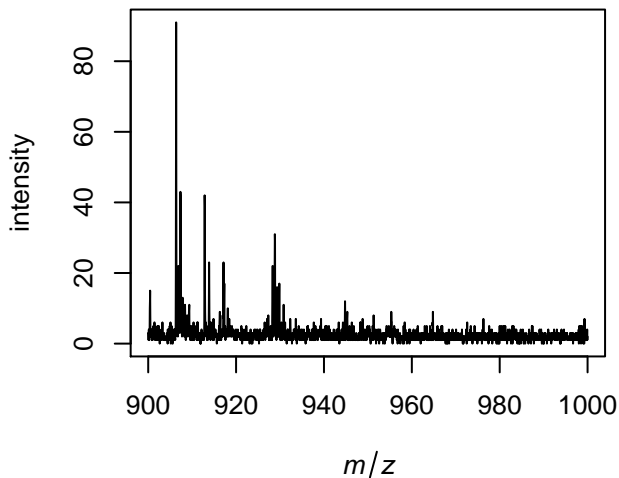
## spectrum 21



## spectrum 12

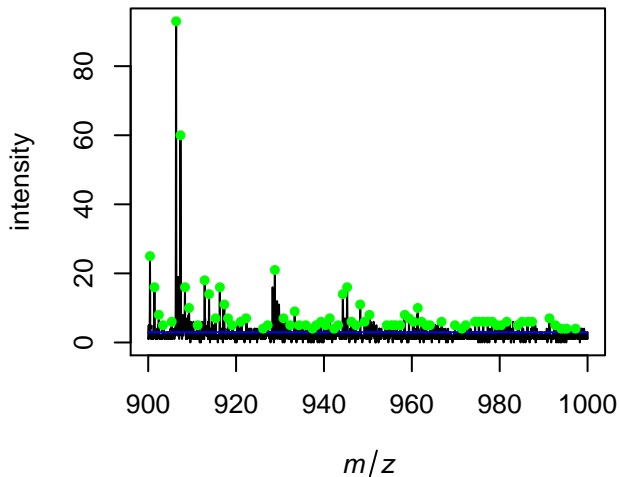


## spectrum 15

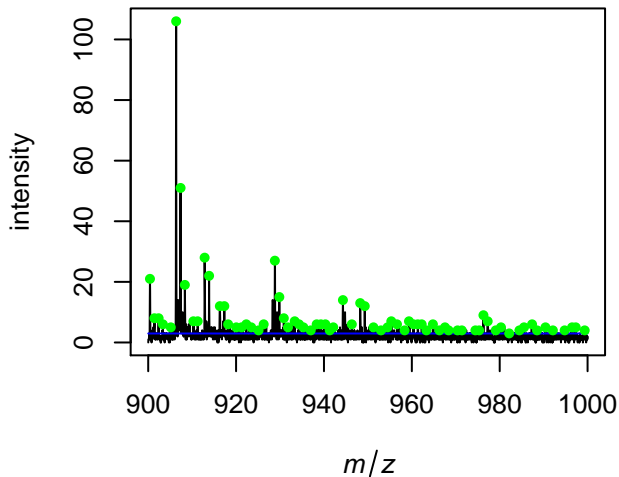


# S/N in blue and picked peaks in green

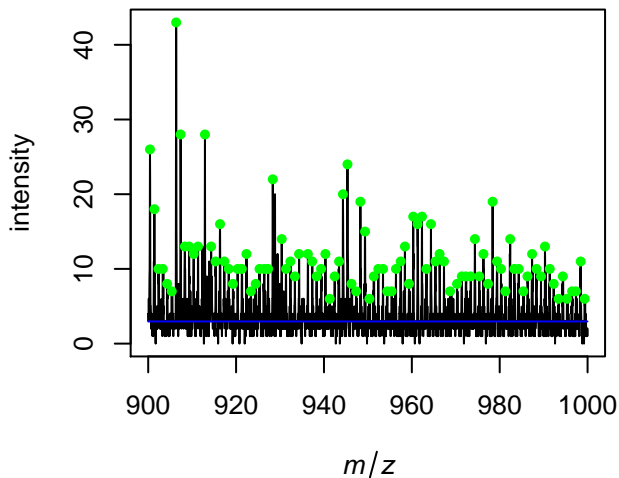
## spectrum 19



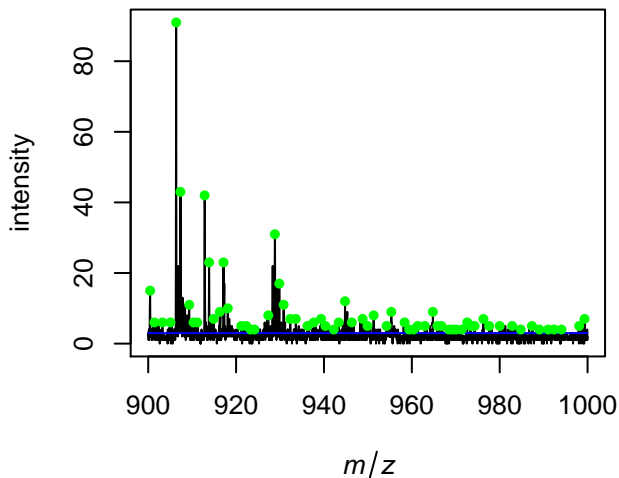
## spectrum 21



## spectrum 12



## spectrum 15





	<b>min m/z</b>	<b>max mz</b>	<b># features</b>	<b>median # peaks (int.&gt;0)</b>	<b>median intensity</b>
<i>inputdata</i>	900.0047	999.9845	2718	2718	3
<i>peaks_picked</i>	900.3989	999.4558	750	77.54	8