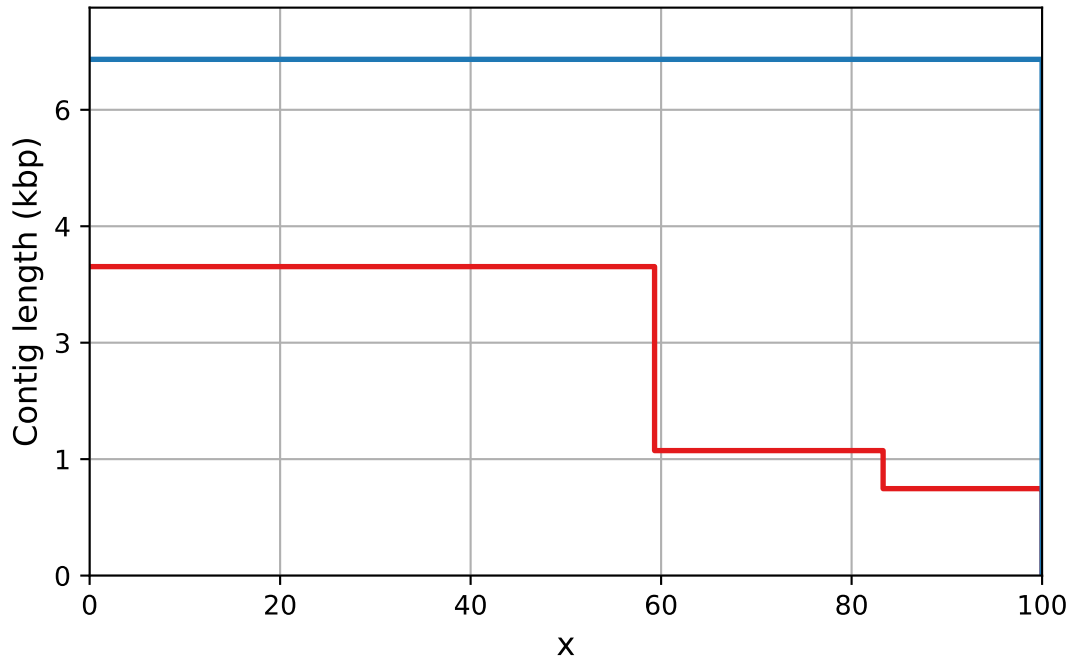


## Report

	contigs1_fna	contigs2_fna
# contigs ( $\geq 0$ bp)	3	1
# contigs ( $\geq 1000$ bp)	3	1
# contigs ( $\geq 500$ bp)	3	1
Total length ( $\geq 0$ bp)	6710	6650
Total length ( $\geq 1000$ bp)	6710	6650
Total length ( $\geq 500$ bp)	6710	6650
# contigs	3	1
Largest contig	3980	6650
Total length	6710	6650
GC (%)	51.28	52.00
N50	3980	6650
N90	1120	6650
auN	2934.0	6650.0
L50	1	1
L90	3	1
# N's per 100 kbp	0.00	0.00

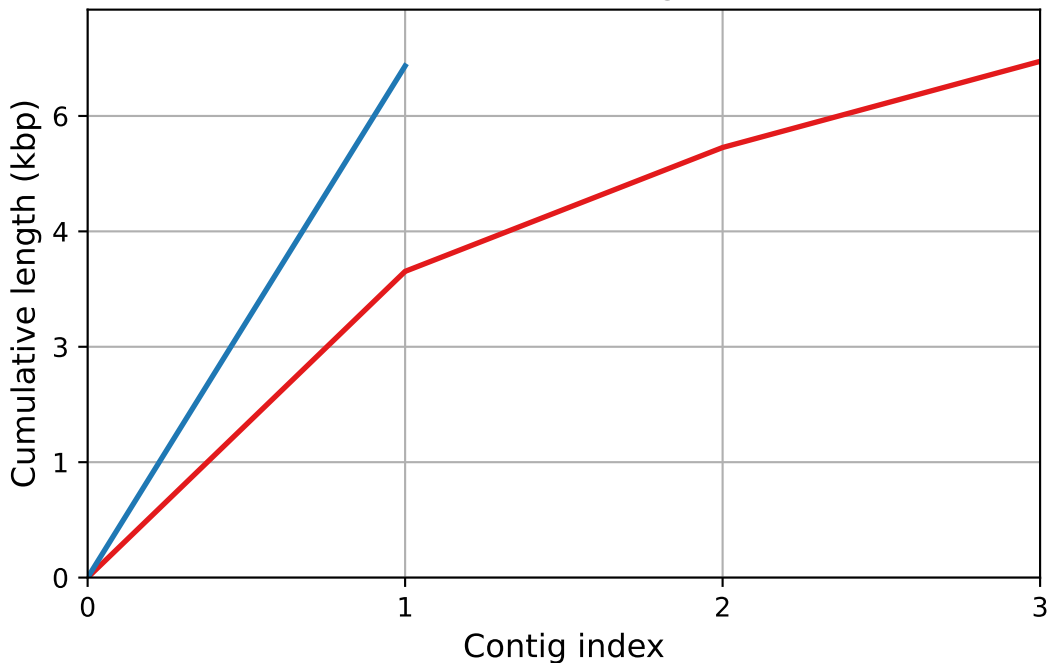
All statistics are based on contigs of size  $\geq 500$  bp, unless otherwise noted (e.g., "# contigs ( $\geq 0$  bp)" and "Total length ( $\geq 0$  bp)" include all contigs).

Nx



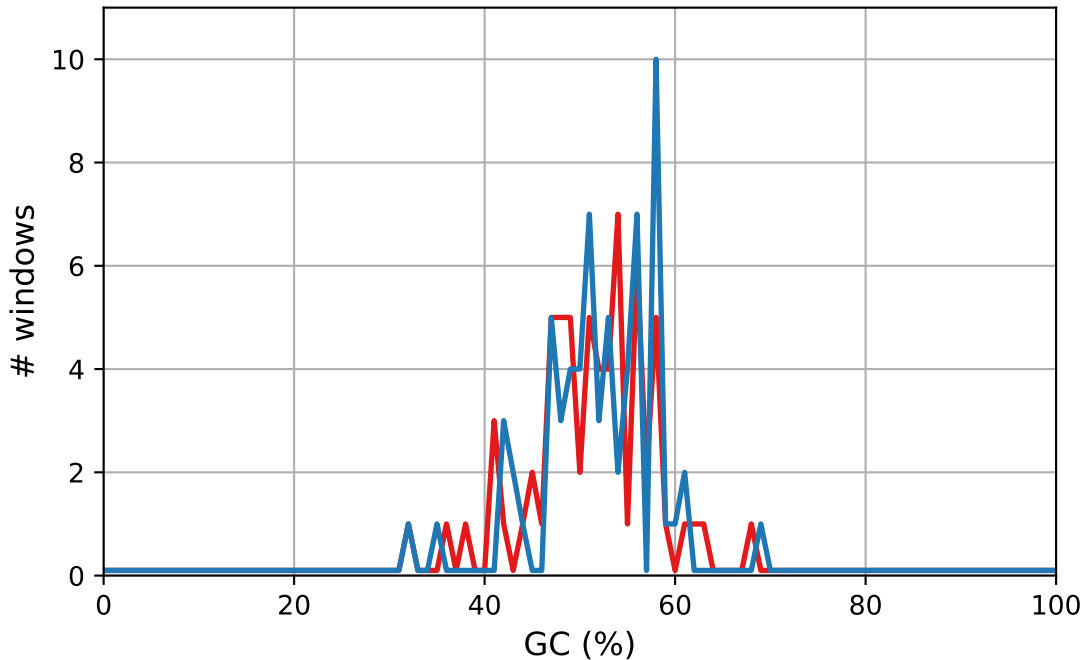
— contigs1\_fna — contigs2\_fna

Cumulative length



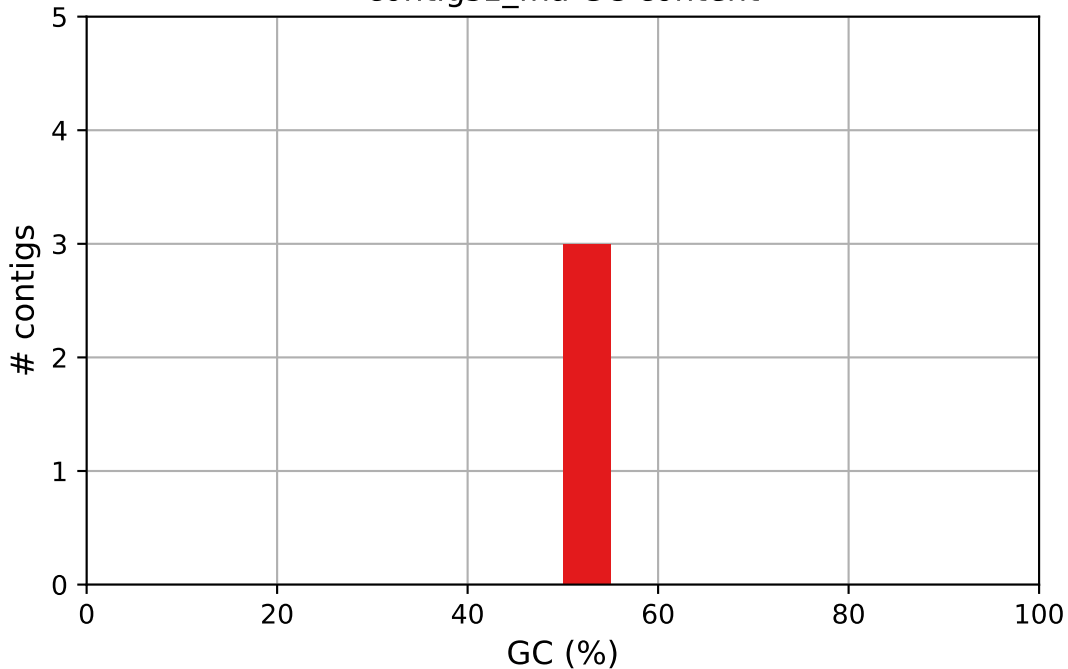
— contigs1\_fna — contigs2\_fna

# GC content



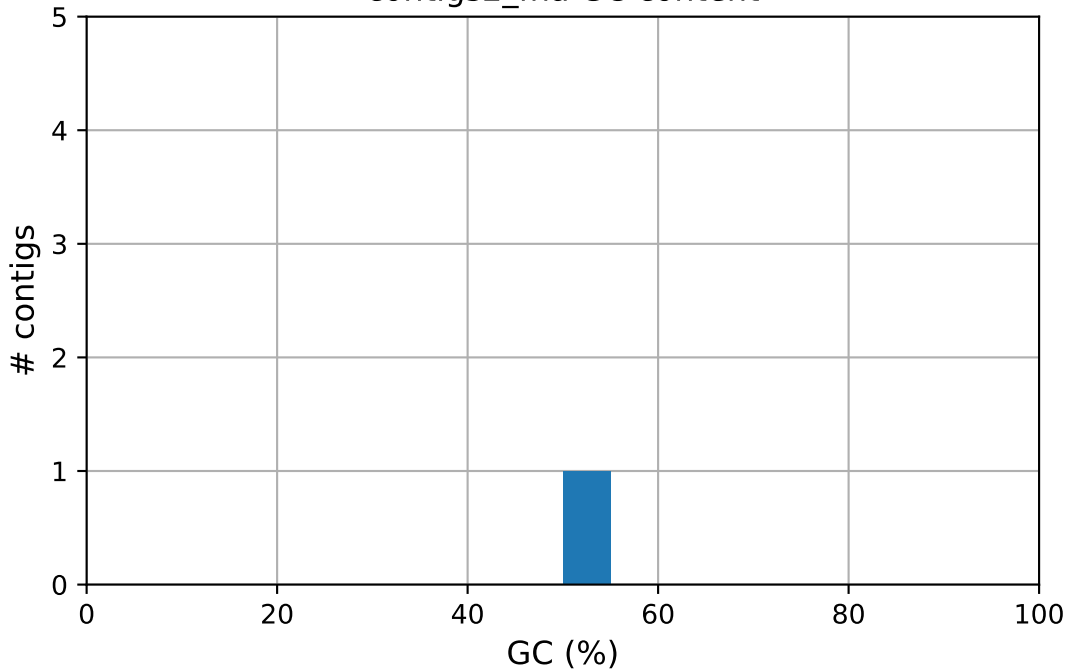
— contigs1\_fna    — contigs2\_fna

contigs1\_fna GC content



contigs1\_fna

contigs2\_fna GC content



contigs2\_fna