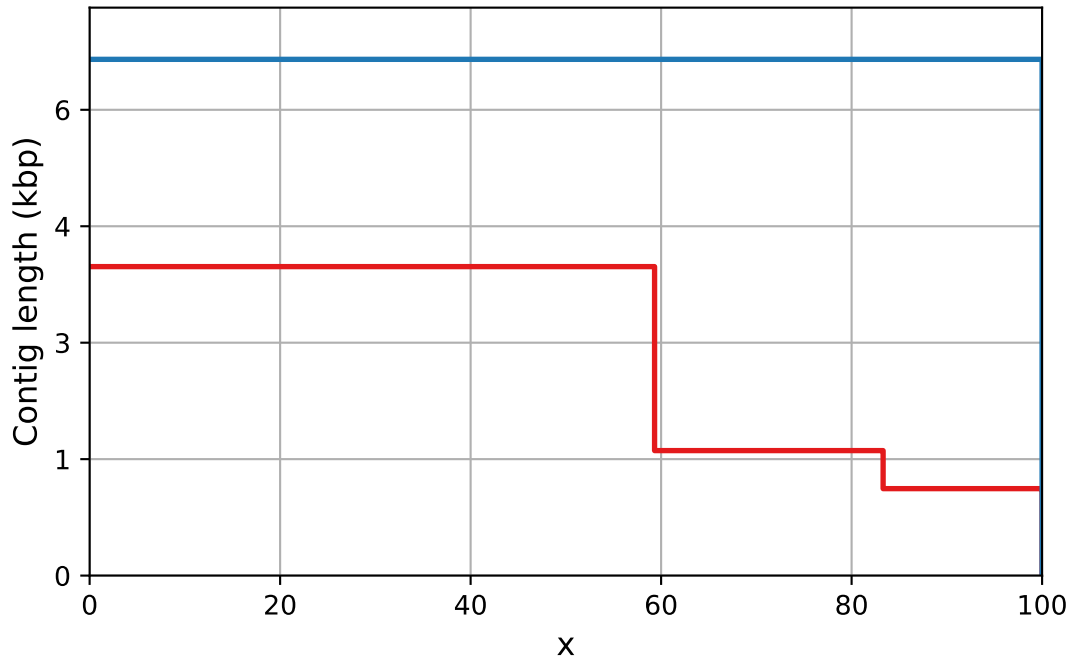


Report

	contigs1_fna	contigs2_fna
# contigs (≥ 0 bp)	3	1
# contigs (≥ 1000 bp)	3	1
# contigs (≥ 500 bp)	3	1
Total length (≥ 0 bp)	6710	6650
Total length (≥ 1000 bp)	6710	6650
Total length (≥ 500 bp)	6710	6650
# contigs	3	1
Largest contig	3980	6650
Total length	6710	6650
GC (%)	51.28	52.00
N50	3980	6650
N75	1610	6650
L50	1	1
L75	2	1
# N's per 100 kbp	0.00	0.00

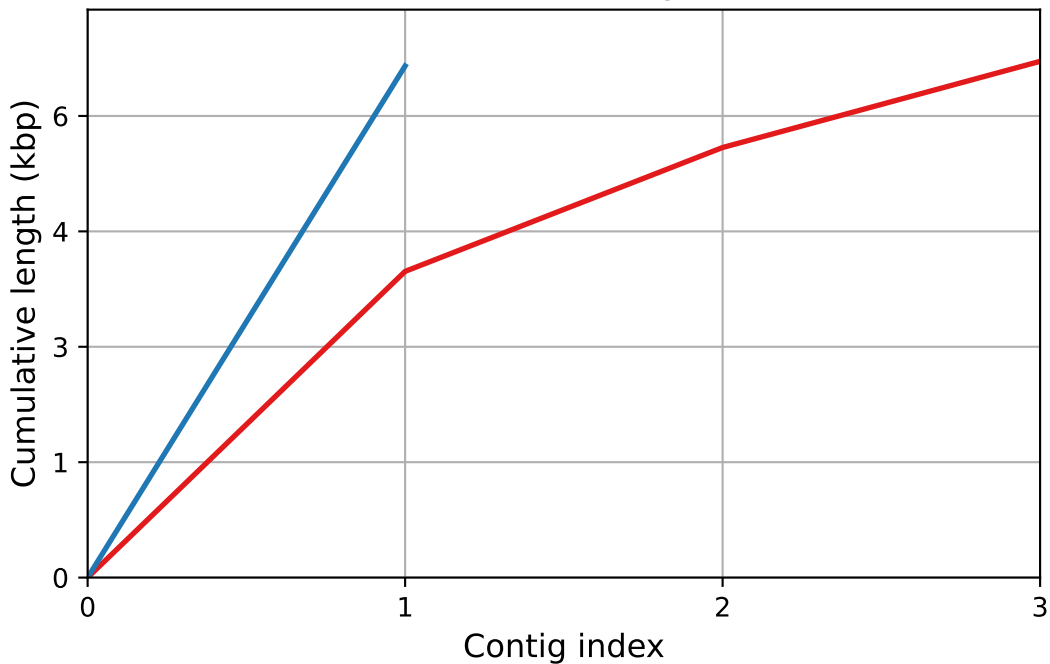
All statistics are based on contigs of size ≥ 500 bp, unless otherwise noted (e.g., "# contigs (≥ 0 bp)" and "Total length (≥ 0 bp)" include all contigs).

Nx

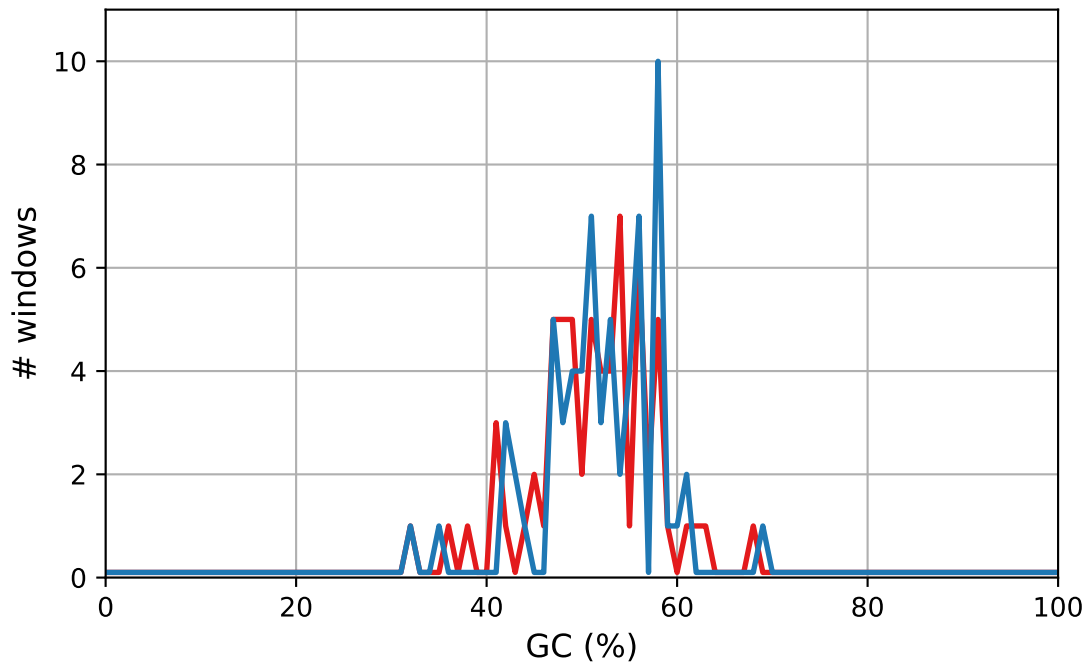


— contigs1_fna — contigs2_fna

Cumulative length

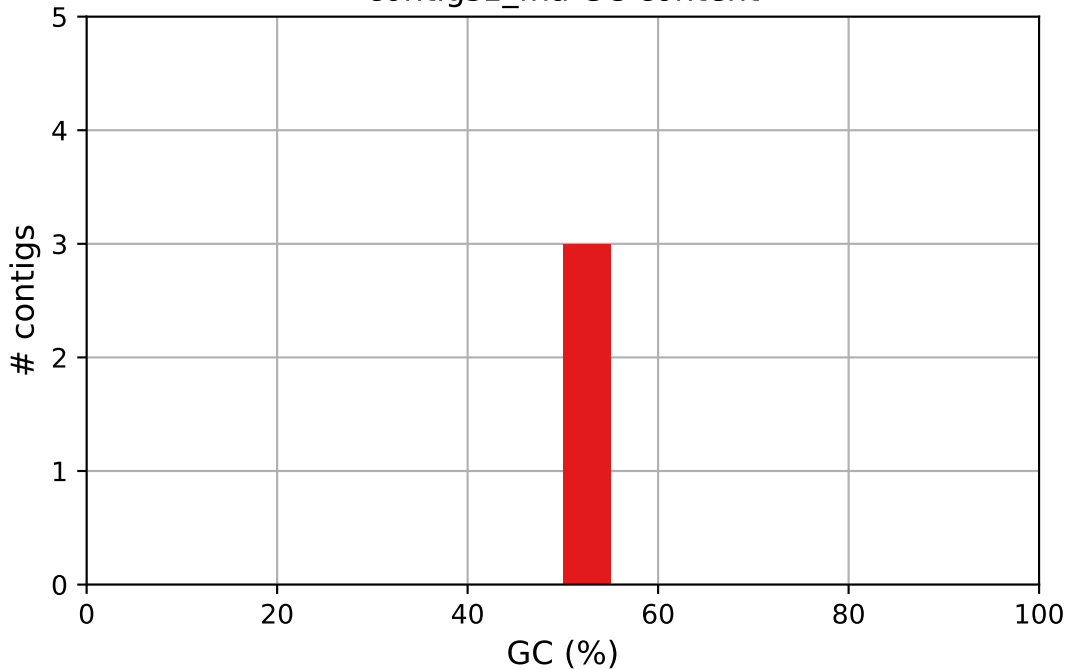


GC content



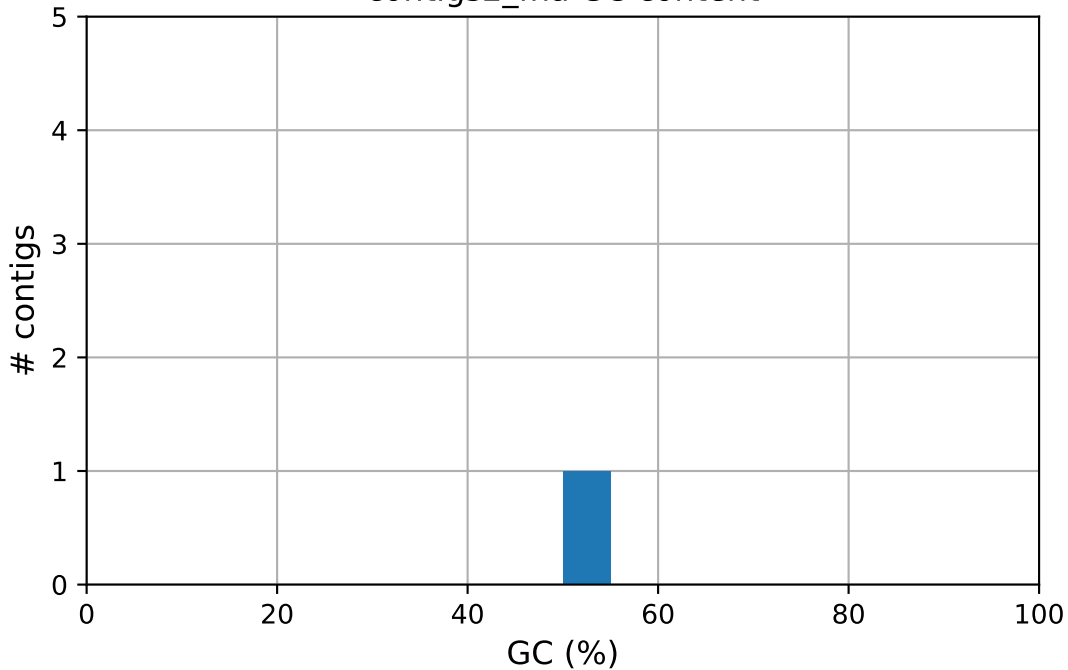
— contigs1_fna — contigs2_fna

contigs1_fna GC content



contigs1_fna

contigs2_fna GC content



contigs2_fna