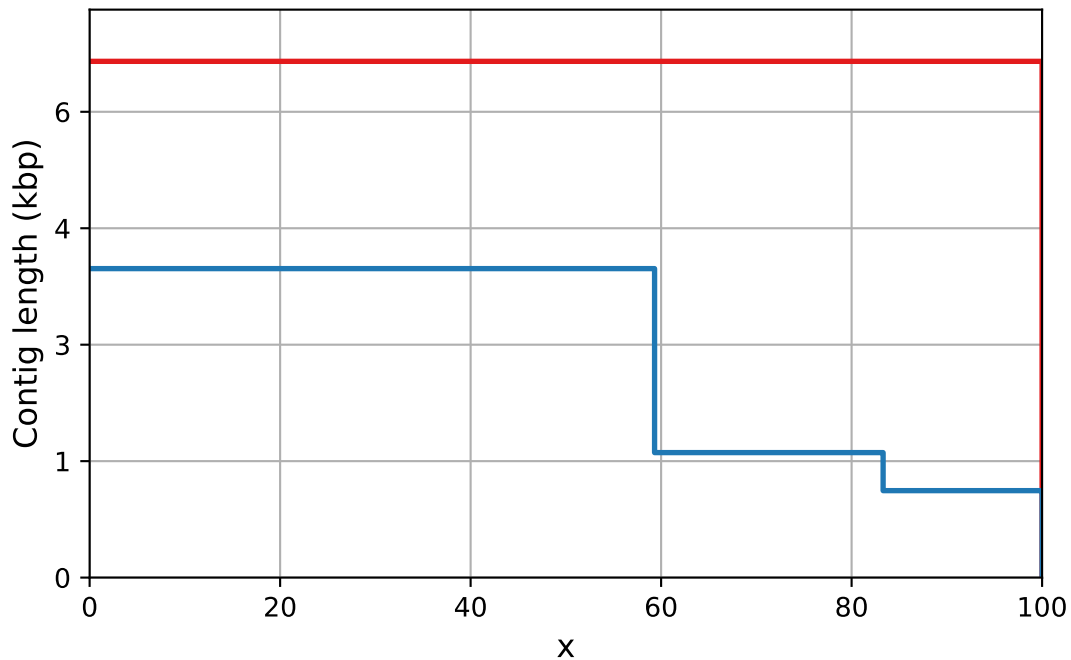


Report

	contigs2_fna	contigs1_fna
# contigs (≥ 0 bp)	1	3
# contigs (≥ 1000 bp)	1	3
Total length (≥ 0 bp)	6650	6710
Total length (≥ 1000 bp)	6650	6710
# contigs	1	3
Largest contig	6650	3980
Total length	6650	6710
GC (%)	52.00	51.28
N50	6650	3980
N75	6650	1610
L50	1	1
L75	1	2
# N's per 100 kbp	0.00	0.00

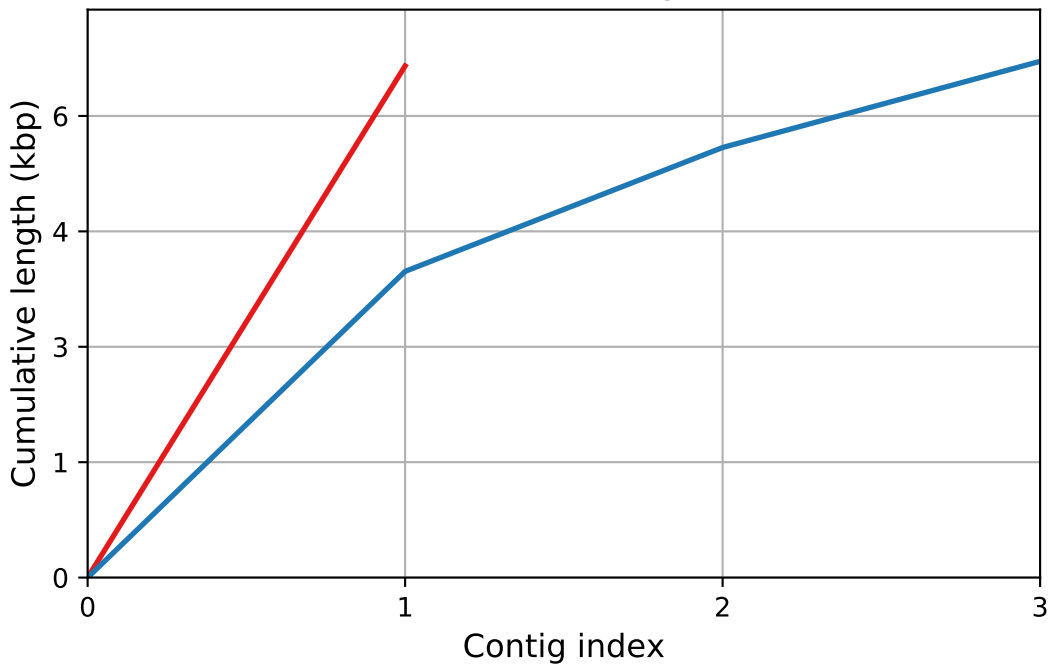
All statistics are based on contigs of size ≥ 500 bp, unless otherwise noted (e.g., "# contigs (≥ 0 bp)" and "Total length (≥ 0 bp)" include all contigs).

Nx



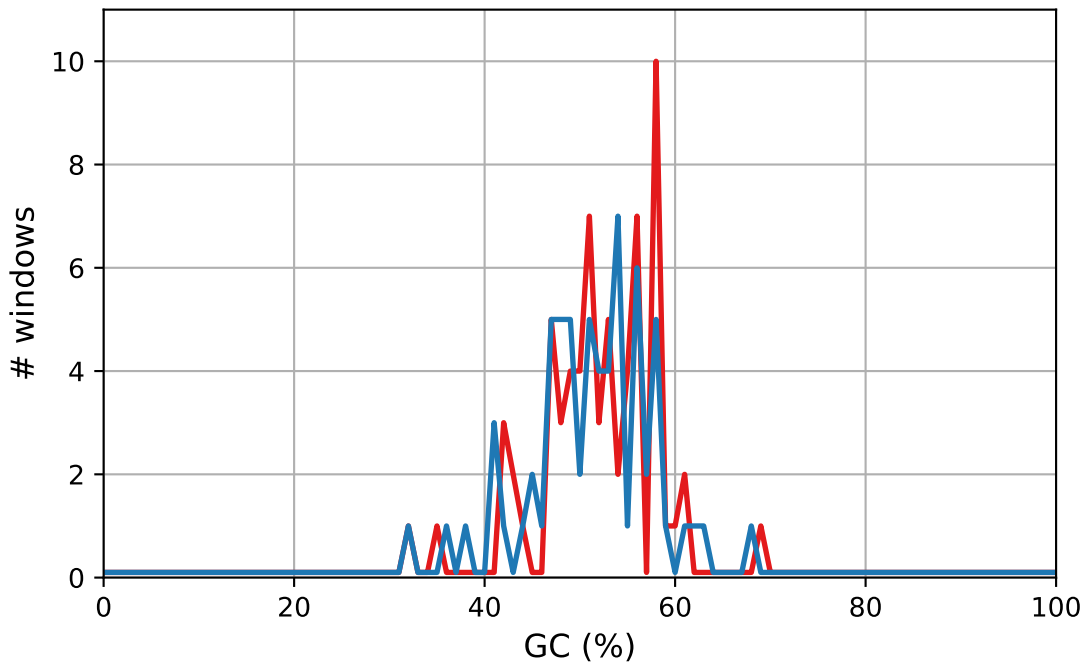
— contigs2_fna — contigs1_fna

Cumulative length



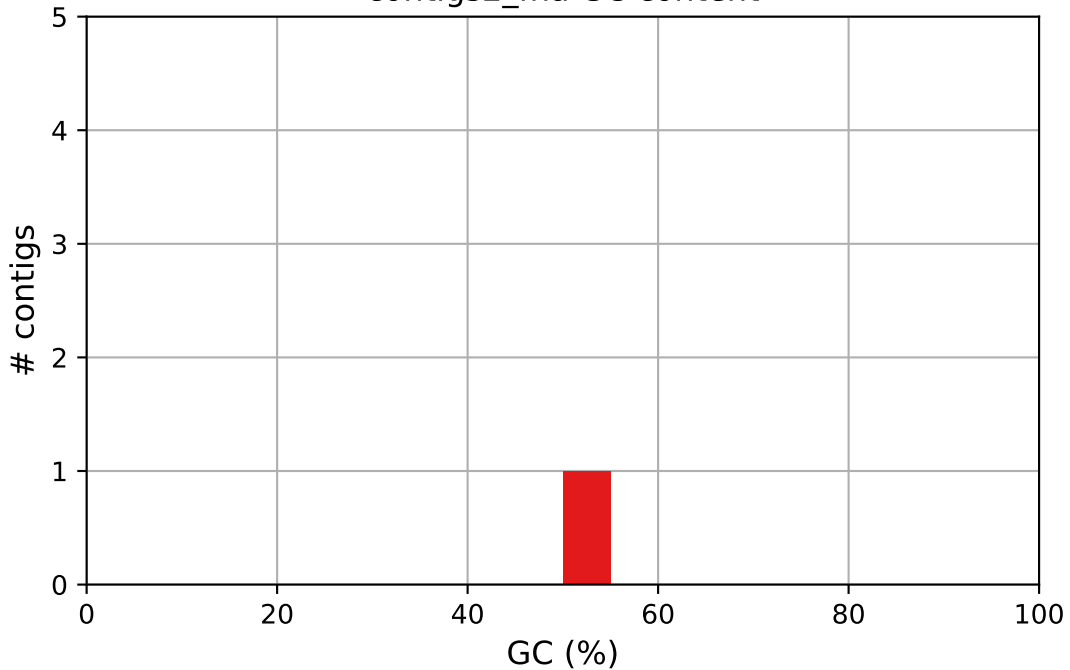
— contigs2_fna — contigs1_fna

GC content



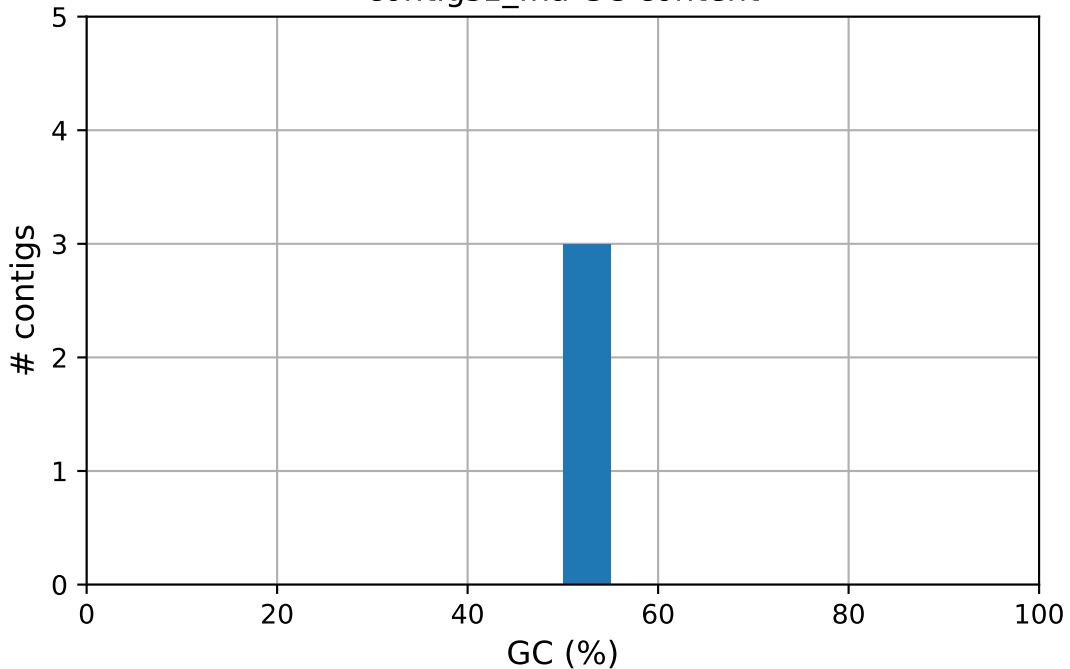
— contigs2_fna — contigs1_fna

contigs2_fna GC content



contigs2_fna

contigs1_fna GC content



contigs1_fna